

TM 5-4320-218-20P

DEPARTMENT OF THE ARMY TECHNICAL MANUAL

ORGANIZATIONAL MAINTENANCE REPAIR PARTS AND SPECIAL TOOLS LIST

PUMP, CENTRIFUGAL: PETROLEUM; GASOLINE ENGINE;
TRAILER MOUNTED; 4 IN., 350 GPM, 275 FT HEAD
(GORMAN-RUPP MODEL 04A12-MVG4D)

FSN 4320-691-1071

(GORMAN-RUPP MODEL 04A12B-MVG4D)

FSN 4320-069-8494

**This copy is a reprint which includes current
pages from Changes 2 and 3.**

HEADQUARTERS, DEPARTMENT OF THE ARMY
APRIL 1968

CHANGE }
No. 3 }

HEADQUARTERS
DEPARTMENT OF THE ARMY
WASHINGTON, D. C., **3 November 1986**

Organizational Maintenance Repair Parts
and Special Tools List

PUMP, CENTRIFUGAL: PETROLEUM; GASOLINE ENGINE;
TRAILER MOUNTED; 4 IN., 350 GPM, 275 FT HEAD
(GORMAN-RUPP MODEL 04A12-MVG4D)
FSN 4320-691-1071
(GORMAN-RUPP MODEL 04A12B-MVG4D)
FSN 4320-069-8494

TM 5-4320-218-20P, 11 April 1968, is changed as follows:

Page 13, Figure 8, Item 1. Change Reference No. "51243" to read "5486N". Change FSCM "25567" to 76700".

Page 17, Figure 16, Item 8, Change NSN from "2920-278-6104" to "2920-00-279-6104".

Page 27, Figure 21, Item 1, Add P/N MS51864-104-14" and FSCM "96906". Change SMR Code from "X20" to "PA".

Page 31, NSN 5307-268-5751. Figure and Item No. blank. Add P/N MS51864-104-12 and FSCM "96906", change SMR code from "0" to "PA".

Page 31, NSN 5307-268-5752, Figure and Item No. blank. Add P/N "MS51864-104-14" and FSCM "96906", Change SMR code "0" to "PA".

Page 31, Figure 22, Item 46, Add P/N "MS51864-104-12" and FSCM "96906". Change SMR code from "0" to "PA".

Page 31, Figure 23, Item 10, Add P/N "MS51864-104-12" and FSCM "96906". Change SMR code from "0" to "PA".

By Order of the Secretary of the Army:

JOHN A. WICKHAM, JR.
General, United States Army
Chief of Staff

Official:

R.L.DILWORTH
Brigadier General United States Army
The Adjutant General

DISTRIBUTION:

To be distributed in accordance with DA Form 12-25A, Organizational Maintenance requirements for Pump, Centrifugal, Petroleum, Trailer Mounted, 350GPM, 275 FT Head, 4 IN (0412-MVG4D, 04A12B-MVG4D) (TM 5-4320-218 Series)

Change }
No. 2 }

HEADQUARTERS
DEPARTMENT OF THE ARMY
Washington, D. C., 26 March 1971

**Organizational Maintenance
Repair Parts and Special Tools List
PUMP, CENTRIFUGAL; PETROLEUM, GASOLINE DRIVEN,
TRAILER MOUNTED; 4 IN., 350 GPM, 275 FT.-HEAD
(GORMAN-RUPP MODEL 04A12-MVG40) FSN 4320-691-1071
(GORMAN-RUPP MODEL 04A12B-MVG4D) FSN 4320-069-8494**

Current as of 19 January 1971

TM 5-4320-218-20P, 11 April 1968, is changed as follows:

Cover and content page are changed as shown above.

Page iv, paragraph 3a(3), Code R is superseded as follows:

<i>Code</i>	<i>Explanation</i>
R	Applied to repair parts (assemblies and components) which are considered economically repairable at direct and general support maintenance levels. When the

Explanation

maintenance capability to repair these items does not exist, they are normally disposed of at the GS level. When supply considerations dictate, some of these repair parts may be listed for automatic return to supply for depot level repair as set forth in AR 710-50. When so listed, they will be replaced by supply on an exchange basis.

Page vi, Section II, Group 0106, line 5, change FSN 5330-599-1285 to read 2940-679-3595.

Page 5, Section IV, is changed as follows:

PAGE	LINE	ACTION	(1)	(2)	(3)	(4)	(5)	(6)	(7)				(8)	
			SMR CODE	FEDERAL STOCK NO.	DESCRIPTION		QTY INC IN UNIT PACK	QTY INC IN UNIT	15-DAY ORGANIZATIONAL MAINT ALLOWANCE				ILLUSTRATIONS	
			INDEX NO.		REFERENCE NO. & MFR. CODE	USABLE ON CODE			(A)	(B)	(C)	(D)	(A)	(B)
									1-5	6-20	21-50	51-100	NO.	ITEM

0106-ENGINE LUBRICATIONS
SYSTEM

5	00067	CH COL 2		2940-679-3595	WASHER: COVER****									
12	00185	CH COL 1; ADD FSN IN COL 2	PO 00185	2910-450-9524	0309-FUEL FILTERS STRAINER ASSEMBLY,FUEL****									

17	00269	ADD FSN COL 2; CHG COL 3		5975-878-3791	0615-RADIO INTERFERENCE SUPPRESSION GROUND ROD ASSEMBLY 13763 (25567)									
----	-------	--------------------------------	--	---------------	--	--	--	--	--	--	--	--	--	--

20	00320	CH COL 1; ADD FSN IN COL 2	PO 00320	2540-835-9039	1503-PINTLES AND TOWING ATTACHMENTS HOOK ASSEMBLY:PINTLE****									
----	-------	----------------------------------	-------------	---------------	--	--	--	--	--	--	--	--	--	--

ALL CHANGES, ADDITIONS OR DELETIONS OF
FEDERAL STOCK NUMBERS, OR MANUFAC-
TURER'S PART NUMBERS SHOULD BE AP-
PROPRIATELY REFLECTED IN THE INDEX*

By Order of the Secretary of the Army:

W. C. WESTMORELAND,
General, United States Army,
Chief of Staff

Official:

KENNETH G. WICKHAM,
Major General United States Army,
The Adjutant General.

Distribution:

To be distributed in accordance with DA Form 12-25, Section I (qty rqr block No. 246) Organizational Maintenance requirements for Pumps, Centrifugal, Petroleum.

TECHNICAL MANUAL }
 No. 5-4320-218-20P }

HEADQUARTERS
 DEPARTMENT OF THE ARMY
 WASHINGTON, D. C., 11 April 1968

ORGANIZATIONAL MAINTENANCE REPAIR PARTS AND SPECIAL TOOLS LIST

PUMP, CENTRIFUGAL: PETROLEUM; GASOLINE ENGINE;

TRAILER MOUNTED; 4 IN., 350 GPM, 275 FT HEAD

(GORMAN-RUPP MODEL 04A12-MVG4D)

FSN 4320-691-1071

(GORMAN-RUPP MODEL 04A12B-MVG4D)

FSN 4320-069-8494

Current as of 12 December 1967

	Paragraph	Page
SECTION I.	INTRODUCTION	
	Scope	1
	General	2
	Explanation of columns	3
	Special information	4
	How to locate repair parts	5
	Abbreviations	6
	Federal supply codes for manufacturers	7
	Report of equipment publication improvements	8
II.	PRESCRIBED LOAD ALLOWANCE	vi
III.	SPECIAL TOOLS, TEST AND SUPPORT EQUIPMENT FOR ORGANIZATIONAL MAINTENANCE NOT APPLICABLE	viii
IV.	REPAIR PARTS FOR ORGANIZATIONAL MAINTENANCE	
Group 01.	Engine	1
	0100 Engine assembly	1
	0101 Crankcase, block, cylinder head	2
	0102 Crankshaft	3
	0103 Flywheel assembly	3
	0105 Valves, camshafts and timing system	3
	0106 Engine lubrication system	3
	0107 Engine starting system	6
	0108 Manifolds	6
03.	Fuel system	7
	0301 Carburetor	7
	0302 Fuel pumps	8
	0304 Air cleaner	8
	0306 Tanks, lines, fittings	9
	0308 Engine speed governor and controls	11
	0309 Fuel filters	12
	0311 Engine starting aids	13
	0312 Accelerator, throttle, or choke controls	13
04.	Exhaust system	13
	0401 Muffler and pipes	13

* This manual supersedes TM 5-4310-218-25P, 7 August 1964, including all changes.

	Paragraph	
Group 05.	Cooling System - - - - -	14
	0502 Cowling, deflectors, air duct, shroud	14
06.	Electrical System (Engine and Vehicular)	15
	0605 Ignition components ..	15
	0607 Instrument or engine control panel ..	16
	0615 Radio interference suppression ..	17
11.	Rear Axle	18
	1100 Rear axle assembly ..	18
13.	Wheels	19
	1311 Wheel assembly	19
	1313 Tires, tubes	19
15.	Frame, Towing Attachments and Drawbar	20
	1501 Frame assembly	20
	1503 Pintles and towing attachments	20
	1507 Landing gear -	21
18.	Body, Cab, Hood, Hull Assemblies	22
	1808 Boxes -	22
22.	Body, Chassis or Hull, and Accessory Items	23
	2201 Canvas items	23
	2202 Accessory items	23
	2210 Data plates	23
47.	Gages - - - - -	24
	4701 Instruments speed and distance	24
	4702 Gages, mountings, lines and fittings ..	25
55.	Pumps	27
	5500 Pump assembly	27
	5505 Suction and/or discharge assembly	28
	5510 Inlet and outlet components	29
	5518 Manifold assembly ..	32
99.	Parts Peculiar - - - - -	32
	9901 Multi-listed parts	32
SECTION V.	FEDERAL STOCK NUMBER AND REFERENCE NUMBER INDEX	56

SECTION I

INTRODUCTION

1. Scope

This manual lists repair parts required for the performance of organizational maintenance of the pump.

2. General

a. The Repair Parts List is arranged as follows :

(1) Individual parts and major assemblies are listed alphabetically by item name within the numbered functional groups.

(2) Assembly components and subassemblies are indented and listed alphabetically by item name under major assemblies.

b. This Repair Parts List is divided into the following sections:

(1) *Prescribed Load Allowance (PLA)*—Section II. A consolidated listing of repair parts quantitatively allocated for initial stockage at the organizational level. *This is a mandatory stockage allowance.*

(2) *Special Tools, Test and Support Equipment*—Section III. None required for this equipment.

(3) *Repair Parts*—Section IV. A list of repair parts authorized for the performance of maintenance at the organizational level.

3. Explanation of Columns

The following provides an explanation of columns in the tabular lists in sections II, III, and IV.

a. Source, Maintenance and Recoverability Codes (SMR) .

(1) Source Code, indicates the selection status and source for the listed item. Source codes are:

<i>Code</i>	<i>Explanation</i>
P	Applied to repair parts which are stocked in or supplied from DSA/GSA or Army supply system, and authorized for use at indicated maintenance categories.
M	Applied to repair parts which are not procured or stocked but are to be manufactured at indicated maintenance categories.
A	Applied to assemblies which are not procured or stocked as such but are made up of two or more units, each of which carry individual stock numbers and descriptions and are procured and stocked and can be assembled by units at indicated maintenance categories.
X	Applied to parts and assemblies which are not procured or stocked, the mortality of which is normally below that of the applicable end item and the failure of which should result in retirement of the end item from the supply system.
X1	Applied to repair parts which are not procured or stocked, the requirement for which will be supplied by the use of the next higher assembly or components.
X2	Applied to repair parts which are not stocked. The indicated maintenance category requiring such repair parts will attempt to obtain them through cannibalization; if not obtainable through cannibalization, such repair parts will be requisitioned with supporting justification through normal supply channels.
C	Applied to repair parts authorized for local procurements. If not obtainable from local procurement, such repair parts will be requisitioned through normal supply channels with a supporting statement of nonavailability from local procurement.
G	Applied to major assemblies that are procured with PEMA (Procurement Equipment Missile Army) funds for initial issue only to be used as exchange assemblies at DSU and GSU maintenance level. These assemblies will not be stocked above DSU and GSU or returned to depot supply level.

Note. Source code is not shown on common hardware items known to be readily available in Army supply channels and through local procurement.

(2) Maintenance Code, indicates the lowest category of maintenance authorized to install the listed item. The maintenance level code is:

<i>Code</i>	<i>Explanation</i>
O	Organizational Maintenance

(3) Recoverability Code, indicates whether unserviceable items should be returned for recovery or salvage. Items not coded are expendable. Recoverability codes are:

<i>Code</i>	<i>Explanation</i>
R	Applied to repair parts and assemblies which are economically repairable at DSU and GSU activities and normally are furnished by supply on an exchange basis.
T	Applied to high dollar value recoverable repair parts which are subject to special handling and are issued on an exchange basis. Such repair parts normally are repaired or overhauled at depot maintenance activities.
U	Applied to repair parts specifically selected for salvage by reclamation units because of precious metal content, critical materials, high dollar value reusable casings or castings.

(4) This column also lists, below the SMR code, an index number for each item in ascending numerical sequence, which is used to locate items in the publication when the Federal stock number and/or reference number is known.

b. Federal Stock Number: This column indicates the Federal stock number for the item.

c. Description: This column indicates the Federal item name and any additional description of the item required. A part number or other reference number is followed by the applicable five-digit Federal supply code for manufactures in parentheses. Repair parts quantities included in the kits, sets, and assemblies are shown in front of the repair part name. Material required for manufacture or fabrication is identified.

d. Unit of Issue: This column indicates the unit used as a basis for issue, e.g., ea, pr, ft, yd, etc.

e. Quantity Incorporated in Unit Pack: This column indicates the actual quantity contained in the unit pack.

f. Quantity Incorporated in Unit: This

column indicates the quantity of the item used in the functional group.

g. Fifteen-Day Organizational Maintenance Allowance, Column (4) of Section II and Column (7) of Section III and IV.

(1) The allowance columns are divided into four subcolumns. Indicated in each subcolumn is the total quantity of items authorized for the number of equipments supported. Items authorized for use as required but not for initial stockage are identified with an asterisk in the allowance column.

(2) The quantitative allowances for organizational level of maintenance represents one initial prescribed load for a 15-day period for the number of equipments supported. Units and organizations authorized additional prescribed loads will multiply the number of prescribed loads authorized by the quantity of repair parts reflected in the appropriate density column applicable to the number of items supported to obtain the total quantity of repair parts authorized.

(3) Organizational units providing maintenance for more than 100 of these equipments shall determine the total quantity of parts required by converting the equipment quantity to a decimal factor by placing a decimal point before the next to last digit of the number to indicate hundredths, and multiplying the decimal factor by the parts quantity authorized in the 51-100 allowance column. Example, authorized allowance for 51-100 equipments is 40; for 150 equipments multiply 40 by 1.50 or 60 parts required.

(4) Subsequent changes to allowances will be limited as follows: No change in the range of items is authorized. If additional items are considered necessary, recommendation should be forwarded to U.S. Army Mobility Equipment Command for exception or revision to the allowance list. Revisions to the range of items authorized will be made by this Command based upon engineering experience, demand data. or TAERS information.

h. Illustration, Column (8). This column is divided as follows:

(1) *Figure Number Column (8a).* Indicates the figure number of the illustration in which the item is shown.

(2) *Item Number, Column. (8b)*. Indicates the callout number used to reference the item in the illustration.

4. Special Information

a. Identifications of the usable on codes included in column (2) of Section II and column (8) of Sections III and IV of this publication are:

<i>Code</i>	<i>Used On</i>
A	MODEL 04 A12B-MVG4D only
B	MODEL 04A12-MVG4D only

b. Repair parts not symbolized are applicable to all models and serial number ranges covered in this publication.

c. Repair parts mortality has been based on 4,000 hours of operation per year.

d. Parts which require manufacture or assembly at a category higher than that authorized for installation will indicate in the source column the higher category.

e. The following publications pertain to the pump and its components:

TM 5-4320-218-15 Operator, organizational, field and depot maintenance manual.

5. How to locate Repair Parts

a. When Federal stock number or reference number is unknown:

(1) *First*. Using the table of contents, determine the functional group within which the repair part belongs.

(2) *Second*. Find the illustration covering the functional group to which the repair part belongs.

(3) *Third*. Identify the repair part on the illustration, and note the illustration figure and item number of the repair part.

(4) *Fourth*. Using the repair parts listing, find the functional group to which the repair part belongs and locate the illustration figure and item number noted on the illustration.

b. When Federal stock number or reference number is known:

(1) *First*. Using the index of Federal

stock numbers and reference numbers, find the pertinent Federal stock number or reference number. This index is in ascending alphanumeric sequence cross-referenced to an index number.

(2) *Second*. Using the repair part listing, find the index number referenced in the index of Federal stock numbers and reference numbers.

6. Abbreviations

<i>Abbreviations</i>	<i>Explanation</i>
No.	number
mtg	mounting
w/	with
thk	thick (ness)
in.	inch (s)
std	standard (s)
thd	thread (s) (ed)
dia	diameter (s)
lg	length (long)
od	outside diameter (s)
id	inside diameter (s)
lh	left hand
rh	right hand

7. Federal Supply Codes for Manufacturers

<i>Code</i>	<i>Manufacturer</i>
00000	Ordnance Corps
03933	Armstrong Machine Works
08162	Bower Roller Bearing Division of Federal Mogul Corp.
08288	Military Supply Standards
09367	Allis-Chalmers Mfg. Co. Harvey Works
18265	Donaldson Co. Inc.
25567	Gorman Rupp Co.
33116	Kelsey-Hayes Co.
36251	Lincoln Engineering Div of McNeil Machine and Engineering Co.
60038	Timken Roller Bearing Co.
61463	United States Rubber Co.
66289	Wisconsin Motor Corp.
70955	Blackstone Mfg. Co.
73370	Fram Corp.
74410	Holland Hitch Co.
78252	Stolper Industries Inc.
78480	Tillotson Mfg. Co.
79470	Weatherhead Co. The
81336	Chief of Engineers
81718	OPW Division of Dover Corp.
82796	Fairbanks Morse and Co. Beloit Works Division.
96152	Marvel-Schebler Products Division of Borg-Warner Corp.
96906	Military Standards Promulgated by Standardization Division Directorate of Logistic Services DSA

8. Report of Equipment Publication Improvements

Report of errors, omissions, and recommendations for improving this publication by the individual user is encouraged. Reports should be

submitted on a DA Form 2028 (Recommended Changes to DA Publications) and forwarded direct to the Commanding General, U.S. Army Mobility Equipment Command, ATTN: AMS-ME-MPP, 4300 Goodfellow Boulevard, St. Louis, Missouri 63120.

**SECTION II
PRESCRIBED LOAD ALLOWANCE**

(1) Federal stock number	(2) Description useable on code	(3) Qty inc in unit pack	(4) 15-Day org maint. allow				
			(A)	(B)	(C)	(D)	
			1-5	6-20	21-50	51-100	
	GROUP 01-ENGINE						
	0100-ENGINE ASSEMBLY						
2805/524/9566	GASKET SET: engine overhaul-----	2	2	4	8		
	0108-ENGINE LUBRICATION SYSTEM						
2805/096/6923	LINE ASSEMBLY: oil return; filter to crankcase	*	2	2	2		
2805/371/4615	LINE ASSEMBLY: case governor -----	*	2	2	2		
2910/464/3768	LINE ASSEMBLY: oil pressure inlet; crankcase to filter.	*	2	2	2		
2940/141/9025	FILTER ELEMENT -----	11	42	84	167		
5330/599/1285	WASHER: cover -----	11	42	84	167		
	GROUP 03-FUEL SYSTEM						
	0301-CARBURETOR						
2910/030/3580	GASKET SET :carburetor -----	*	2	8	5		
2910/255/2298	CARBURETOR, FLOAT -----	*	2	8	5		
	0302-FUEL PUMPS						
2910/339/4836	PUMP, FUEL -----	*	2	8	5		
	0304-AIR CLEANER						
4720/288/9766	HOSE, PREFORMED: air cleaner tube -----	*	2	2	2		
4720/807/7088	HOSE, RUBBER: air cleaner tube -- ----	*	2	2	2		
	0306-TANKS, LINES, FITTINGS						
2910/141/9758	CAP, FUEL TANK -----	*	2	2	2		
	0309-FUEL FILTERS						
2910/142/2738	ELEMENT, FUEL STRAINER	2	2	4	8		
2910/354/3834	BOWL, SEDIMENT: metal -----	2	*	2	2		
5330/187/2962	WASHER, NONMETALLIC: bowl ----	2	5	10	21		
	GROUP 06-ELECTRICAL SYSTEM (ENGINE AND VEHICULAR)						
	0605-IGNITION COMPONENTS						
2920/293/5212	SPARK PLUG.	5	10	21	42		
2920/524/9572	CABLE, SHIELDED, SPARK PLUG: No. 1 -----	2	2	4	8		
2920/524/9573	CABLE, SHIELDED, SPARK PLUG: No. 2 -----	2	2	4	8		
2920/524/9574	CABLE, SHIELDED, SPARK PLUG : No. 3	2	2	4	8		
2920/524/9578	CABLE, SHIELDED, SPARK PLUG : No. 4 -----	2	2	4	8		
2920/656/7336	MAGNETO ASSEMBLY -----	*	2	2	2		
2920/810/7082	SPARK PLUG. A	5	10	21	42		
2920/887/1289	CABLE, SHIELDED, SPARK PLUG : No. 3 ----- -A	2	2	4	8		
2920/924/2042	CABLE, SHIELDED, SPARK PLUG : No. 2 ----- A	2	2	4	8		
2920/941/6108	CABLE, SHIELDED, SPARK PLUG : No. 1 and 4 ----	2	2	4	8		
2920/876/8348	0607-INSTRUMENT OR ENGINE CONTROL PANEL SWITCH, IGNITION -----	*	*	2	2		

(1) FEDERAL STOCK NUMBER	(2) DESCRIPTION USEABLE ON CODE	(3) QTY INC IN UNIT PACK	(4) 15-DAY ORG MAINT. ALW (A) (B) (C) (D) 1-5 6-20 21-50 51-100			
GROUP 13-WHEELS						
1311-WHEEL ASSEMBLY						
2530/727/1109	GASKET: CAP TO HUB	*	2	2	3	
3110/100/0532	CUP, TAPERED ROLLER BEARING	*	*	2	2	
3110/100/3526	CONE AND ROLLERS, TAPERED ROLLER BEARING: WHEEL.	*	*	2	2	
5306/206/1555	BOLT, RIBBED SHOULDER: WHEEL MTG	*	2	2	3	
5310/523/2405	NUT, CONE SEAT, HEXAGON: WHEEL	*	2	4	7	
5330/285/6378	SEAL, PLAIN ENCASED	*	2	2	3	
1313-TIRES, TUBES						
2610/269/7332	INNER TUBE, PNEUMATIC TIRE	*	*	2	2	
2610/269/9586	TIRE, PNEUMATIC	*	*	2	2	
GROUP 22-BODY, CHASSIS OR HULL, AND ACCESSORY ITEMS						
2202-ACCESSORY ITEMS						
9905/734/5903	REFLECTOR: RUBY	*	2	2	3	
9905/734/5904	REFLECTOR: AMBER	*	2	2	3	
GROUP 47-GAGES						
4701-INSTRUMENTS, SPEED AND DISTANCE						
6680/331/7887	SHAFT ASSEMBLY, FLEXIBLE	*	2	2	2	
6680/514/4094	TACHOMETER	*	2	2	2	
4702-GAGES, MOUNTINGS, LINES AND FITTINGS						
3990/563/8012	GAGE, PRESSURE, DIAL INDICATOR: ENGINE OIL	*	2	2	3	
4720/656/7456	HOSE ASSEMBLY; RUBBER: GAGE TO MANIFOLD	*	2	2	2	
6685/718/9985	GAGE, PRESURE, DIAL INDICATOR	*	2	2	3	
6685/766/8173	GAGE, VACUUM, DIAL INDICATOR	*	2	2	3	
6685/766/8175	HOSE ASSEMBLY, RUBBER: OIL GAGE TO GAGE	*	2	2	2	
GROUP 55-PUMPS						
5500-PUMP ASSEMBLY						
5330/096/8177	GASKET: COVER PLATE	*	2	2	3	
5330/612/2414	GASKET: DUST CAP	*	2	4	7	
5505-SUCTION AND/OR DISCHARGE ASSEMBLY						
3110/198/1050	GALL: 3/8 IN. DIA	*	2	2	2	
4720/732/7554	HOSE, RUBBER: ELIMINATOR VALVE	*	2	2	2	
4820/287/4268	COCK, DRAIN: ELIMINATOR VALVE	*	2	2	2	
5330/542/1090	GASKET: ELIMINATOR MTG	*	2	2	3	
5510-INLET AND OUTLET COMPONENTS						
4930/732/7749	GASKET: COVER	2	2	4	8	
4930/732/7750	GASKET: SCREEN	2	2	4	8	
5330/542/1092	GASKET: VALVE SEAT	*	2	2	3	
5330/899/4509	GASKET: DUST PLUG	2	4	9	17	
GROUP 99-PARTS PECULIAR						
9901-MULTI-LISTED PARTS						
5330/255/1298	GASKET	*	*	2	2	
5330/542/1091	GASKET	3	11	21	42	

SECTION III
SPECIAL TOOLS, TEST AND SUPPORT EQUIPMENT FOR
ORGANIZATIONAL MAINTENANCE

None required for this equipment.

(1) SMR CODE INDEX NO.	(2) FEDERAL STOCK NUMBER	(3) DESCRIPTION REFERENCE NO. & MFR. CODE	(4) USABLE ON CODE UNIT OF ISSUE	(5) QTY INC IN UNIT PACK	(6) QTY INC IN UNIT	(7) 15-DAY ORGANIZATIONAL MAINTENANCE ALW (A) (B) (C) (D)	(8) ILLUS- TRATION (A) (B) FIG ITEM NO. NO.
SECTION IV - REPAIR PARTS FOR ORGANIZATIONAL MAINTENANCE							
00001		GROUP 01 - ENGINE					
00002		0100 - ENGINE ASSEMBLY					
P O 00003	2805-524-9566	GASKET SET: ENGINE OVERHAUL Q18C (66289)	EA	1	2	2 4 8	
X1 00004	2805-366-6351	GASKET: ADAPTER TO BLOCK QD67 (66289)	EA	1	SEE	GRP 0311	
X1 00005	2805-624-9940	GASKET: CARBURETOR SPACER QF91 (66289)	EA	1	SEE	GRP 0301	
X1 00006	2805-428-2162	GASKET: COVER PLATE QD635 (66289)	EA	1	SEE	GRP 0106	
X1 00007	2805-399-6984	GASKET: CYLINDER HEAD QD631 (66289)	EA	2	SEE	GRP 0101	
X1 00008	5330-599-5966	GASKET: FUEL PUMP TO ADAPTER QD538A (66289)	EA	1	SEE	GRP 0302	
X1 00009	2990-358-4789	GASKET: GOVERNOR MTG QD615 (66289)	EA	1	SEE	GRP 0308	
X1 00010	2920-360-8381	GASKET: MAGNETO MTG QD616 (66289)	EA	1	SEE	GRP 0605	
X1 00011	2805-399-6982	GASKET: MANIFOLD TO BLOCK QC62 (66289)	EA	2	SEE	GRP 0108	
X1 00012	2940-536-1257	GASKET: OIL FILTER PAD COVER QD595A (66289)	EA	1	SEE	GRP 0101	
X1 00013	5330-536-8804	GASKET: TAPPET COVER QD482 (66289)	EA	4	SEE	GRP 0105	
X1 00014	2805-292-3984	RETAINER, PACKING: MANIFOLD QB83 (66289)	EA	6	SEE	GRP 0108	
0 00015	5310-763-8920	NUT, PLAIN, HEXAGON: SUPPORT TO FRAME MTG	EA	8	*	* * * *	1 4
0 00016	5305-042-5953	SCREW, CAP, HEXAGON HEAD: SUPPORT MTG	EA	4	*	* * * *	1 6

(1) SMR CODE INDEX NO.	(2) FEDERAL STOCK NUMBER	(3) DESCRIPTION REFERENCE NO. & MFR. CODE	(4) USABLE ON CODE UNIT OF ISSUE	(5) QTY INC IN UNIT PACK	(6) QTY INC IN UNIT PACK	(7) 15-DAY ORGANIZATIONAL MAINTENANCE ALW (A) (B) (C) (D)	(8) ILLUS- TRATION (A) (B) FIG ITEM NO. NO.
0 00017 X2 0 00018	5305-724-6761	SCREW, CAP, HEXAGON HEAD: SUPPORT TO FRAME MTG SUPPORT: ENGINE BK72A (66289)	EA		4	* * * *	1 1
0 00019 0 00020	5310-012-1574 5310-017-8632	WASHER, LOCK: SUPPORT MTG WASHER, LOCK: SUPPORT TO FRAME MTG	EA EA		4 8	* * * * * * * *	1 5 1 2
00021		0101 - CRANKCASE, BLOCK, CYLINDER HEAD					
P O 00022	2805-766-8163	CYLINDER HEAD: W/SPARK PLUG INSERT AB97B2S (66289)	EA		2	* * * *	2 8
X1 00023	2805-399-6984	GASKET: CYLINDER HEAD (COMPONENT OF GASKET SET, STOCK NO. 2805-524-9566, SEE GROUP 0100) QD631 (66289)	EA		2		2 7
X1 00024	2940-536-1257	GASKET: OIL FILTER PAD COVER (COMPONENT OF GASKET SET, STOCK NO. 2805-524-9566, SEE GROUP 0100) QD595A (66289)	EA		1		3 5
0 00025 X2 0 00026	5310-265-9214	NUT, PLAIN, HEXAGON: COVER PLATE MTG PLATE, COVER: OIL FILTER PAD SA65A (66289)	EA EA		2 1	* * * * *	3 4
X2 0 00027	2805-368-6641	PLATE, VALVE TAPPET INSPECTION BH103 (66289)	EA		4	SEE GRP 0105	
0 00028 0 00029 P O 00030	5305-269-3214 5305-674-3583 2940-360-8326	SCREW, CAP, HEXAGON HEAD: CYLINDER HEAD MTG SCREW, CAP, HEXAGON HEAD: VALVE TAPPET COVER STRAINER, ELEMENT RC91 (66289)	EA EA EA		34 4 1	* * * * SEE GRP 0105 SEE GRP 0106	2 10
X2 0 00031	5307-208-5815	STUD, PLAIN: MANIFOLD MTG PC251 (66289)	EA		4		2 6

(1) SMR CODE INDEX NO.	(2) FEDERAL STOCK NUMBER	(3) DESCRIPTION REFERENCE NO. & MFR. CODE	(4) USABLE ON CODE UNIT OF ISSUE	(5) QTY INC IN UNIT PACK	(6) QTY INC IN UNIT	(7) 15-DAY MAINTENANCE ORGANIZATIONAL ALW FIG NO.	(8) ILLUS- TRATION (A) (B) (C) (D) NO.	(9) ILLUS- TRATION (A) (B) NO.
X2 0 00032	4320-647-1918	TUBE, OIL FILLER LJ300M (66289)	EA		1	SEE GRP 0106		
0 00033	5310-149-9130	WASHER, FLAT: CYLINDER HEAD MTG	EA		34	* * * *	2	9
0 00034	5310-221-3129	WASHER, FLAT: TAPPET COVER	EA		4	SEE GRP 0105		
0 00035	5310-010-3320	WASHER, LOCK: COVER PLATE MTG	EA		2	* * * *	3	3
00036		0102 - CRANKSHAFT						
X2 0 00037	5315-584-1623	KEY, WOODRUFF: FLYWHEEL TO CRANKSHAFT, NO. 29 PL24 (66289)	EA		1		4	1
X2 0 00038	5315-647-1931	PIN, CRANKSHAFT PA334 (66289)	EA		1		4	7
00039		0103 - FLYWHEEL ASSEMBLY						
X2 0 00040	2805-575-0589	FLYWHEEL ASSEMBLY NC146H (66289)	EA		1		4	2
0 00041	5310-582-9920	NUT, PLAIN, HEXAGON: FLYWHEEL	EA		1	* * * *	4	5
X2 0 00042	5310-209-3586	WASHER, KEY: FLYWHEEL MTG PE65-1 (66289)	EA		1		4	4
00043		0105 - VALVES, CAMSHAFTS AND TIMING SYSTEM						
X1 00043A	5330-536-8804	GASKET: TAPPET COVER QD482 (66289)	EA		4		2	1
X2 0 00044	2805-368-6641	PLATE, VALVE TAPPET INSPECTION BH103 (66289)	EA		4		2	2
0 00045	5305-674-3583	SCREW, CAP, HEXAGON HEAD: VALVE TAPPET COVER	EA		3	* * * *	2	3
0 00046	5310-360-8336	WASHER, FLAT: TAPPET COVER	EA		4	* * * *	2	4
00047		0106 - ENGINE LUBRICATION SYSTEM						
X2 0 00048	4730-266-0532	ADAPTER, STRAIGHT, PIPE TO TUBE: RETURN LINE AT GOVERNOR RF269 (66289)	EA		1		13	1
0 00049	5306-225-8496	BOLT, MACHINE: FILTER MTG	EA		4	* * * *	5	17

(1) SMR CODE INDEX NO.	(2) FEDERAL STOCK NUMBER	(3) DESCRIPTION REFERENCE NO. & MFR. CODE	(4) USABLE ON CODE UNIT OF ISSUE	(5) QTY INC IN UNIT PACK	(6) QTY INC IN UNIT	(7) 15-DAY MAINTENANCE (A)	ORGANIZATIONAL ALW (B)	(C)	(D)	(8) ILLUS- TRATION (A) FIG NO.	(B) (B) ITEM NO.
0 00050 X2 0 00051	5306-225-8496	BOLT, MACHINE: OIL PAN MTG BREATHER, CRANKCASE: W/CHAIN L060-1 (66289)	EA		14	*	*	*	*	7	1
X2 0 00052	4730-692-8775	ELBOW, PIPE TO TUBE: PRESSURE LINE AT FILTER RF270-4 (66289)	EA		1					5	16
X2 0 00053	4730-254-6225	ELBOW, PIPE TO TUBE: RETURN LINE AT FILTER 49X4A (79470)	EA		1					5	14
X2 0 00054		ELBOW, PIPE TO TUBE: RETURN LINE AT TIMING GEAR COVER, BRASS; ONE END MALE, 1/4 IN. TUBE, 7/16-20 THD SIZE; OTHER END MALE, 3/8-18 THD SIZE RF1343 (66289)	EA		1						
X2 0 00055	2940-202-9653	FILTER, FLUID PRESSURE F21P (73370)	EA		1					5	
X1 00056	2940-313-6590	BODY, OIL FILTER 5310 (73370)	EA		1					5	12
X2 0 00057	2940-393-5988	COVER ASSEMBLY 5241 (73370)	EA		1						
X2 0 00058	5306-396-0855	BOLT, SHOULDER 11580 (73370)	EA		1					5	1
X2 0 00059	2940-752-9093	COVER 11559 (73370)	EA		1					5	3
X2 0 00060	4330-291-5092	SPRING, HELICAL, COMPRESSION 11583 (73370)	EA		1					5	4
X2 0 00061	5310-262-3000	WASHER, FLAT: SHOULDER BOLT 11581 (73370)	EA		1					5	2
P O 00062	2940-141-9025	FILTER ELEMENT C21P (73370)	EA		1	11	42	84	167	5	6
0 00063	5310-982-4949	NUT, PLAIN, SQUARE: STRAP	EA		2	*	*	*	*	5	9

(1) SMR CODE INDEX NO.	(2) FEDERAL STOCK NUMBER	(3) DESCRIPTION REFERENCE NO. & MFR. CODE	(4) USABLE ON CODE UNIT OF ISSUE	(5) QTY INC IN UNIT PACK	(6) QTY INC IN UNIT	(7) 15-DAY MAINTENANCE (A) 1-5	ORGANIZATIONAL ALW (B) 6-20	(C) 21-50	(D) 51-100	(8) ILLUS- TRATION (A) FIG NO.	(B) (B) ITEM NO.
0 00064 X2 0 00065	5305-371-3333 2940-391-3328	SCREW, MACHINE: STRAP SPACER, FILTER ELEMENT 11562 (73370)	EA		2	*	*	*	*	5	11
X2 0 00066	2940-391-3330	STRAP 102153 (73370)	EA		1					5	7
X2 0 00066	2940-391-3330	STRAP 102153 (73370)	EA		2					5	8
P O 00067	5330-599-1285	WASHER: COVER 11582 (73370)	EA		1	11	42	84	167	5	5
0 00068 X2 0 00069	5310-010-3320 6680-343-5561	WASHER, LOCK: STRAP GAGE-ROD-CAP, LIQUID LEVEL: SHORT; STARTER SIDE RJ143S1 (66289)	EA		2	*	*	*	*	5	10
X2 0 00069	6680-343-5561	GAGE-ROD-CAP, LIQUID LEVEL: SHORT; STARTER SIDE RJ143S1 (66289)	EA		1					6	2
P O 00070	5330-255-1298	GASKET: OIL SABER PH245 (66289)	EA		SEE	GRP	9901			6	1
X1 00071	2805-428-2162	GASKET: COVER PLATE (COMPONENT OF GASKET SET, STOCK NO. 2805-524-9566, SEE GROUP 0100) (CAN BE MANUFACTURED FROM PAPER STOCK NO. 5330-270-8469) QD635 (66289)	EA		1					7	4
P O 00072	2805-371-4615	LINE ASSEMBLY: CASE GOVERNOR RM536 (66289)	EA		1	*	2	2	2	13	2
X1 00073	4730-011-6452	NUT, TUBE COUPLING	EA		2						
X1 00074	4710-277-5525	TUBE, COPPER	EA		1						
P O 00075	2910-464-3768	LINE ASSEMBLY: OIL PRESSURE INLET; CRANKCASE TO FILTER RM1161 (66289)	EA		1	*	2	2	2	5	15
X1 00076	4730-287-1539	NUT, TUBE COUPLING	EA	2							
X1 00077	4710-277-5525	TUBE, COPPER (24 IN. REQUIRED)	EA		1						
P O 00078	2805-096-6923	LINE ASSEMBLY: OIL RETURN; FILTER TO CRANKCASE RM772 (66289)	EA		1	*	2	2	2	5	13
X1 00079	4730-287-1539	NUT, TUBE COUPLING	EA		2						

(1) SMR CODE INDEX NO.	(2) FEDERAL STOCK NUMBER	(3) DESCRIPTION REFERENCE NO. & MFR. CODE	(4) USABLE ON CODE	(5) QTY INC IN UNIT PACK	(6) QTY INC IN UNIT PACK	(7) 15-DAY ORGANIZATIONAL MAINTENANCE ALW (A) (B) (C) (D)				(8) ILLUS- TRATION (A) (B) FIG ITEM NO. NO.		
						1-5	6-20	21-50	51-100			
X1 00080	4710-277-5525	TUBE, COPPER (12 IN. REQUIRED)		EA		1						
X2 0 00081		PAN, OIL BH155C (66289)	B	EA		1				7	3	
X2 0 00082	4730-968-6129	PLUG, PIPE: DRAIN; MAGNETIC XK7A (66289)		EA		1				6	5	
X2 0 00083		PLUG, PIPE: DRAIN, MAGNETIC XK7B (66289)	A	EA		1				6	5	
X2 0 00084		SABER, OIL: LG RJ159C (66289)		EA		1				6	4	
P O 00085	5330-255-1298	GASKET: OIL SABER PH245 (66289)		EA		1	SEE	GRP	9901	6	1	
P O 00086	2805-360-8326	STRAINER, ELEMENT RC91 (66289)		EA		1	*	*	*	*	3	1
X2 0 00087	4730-900-7233	TEE, PIPE TO TUBE: GOVERNOR RF1281 (66289)		EA		1				13	6	
X2 0 00088	4320-647-1918	TUBE, OIL FILLER LJ300M (66289)		EA		1				3	2	
0 00089	5310-010-3320	WASHER, LOCK: FILTER MTG		EA		4	*	*	*	*	5	10
0 00090	5310-010-3320	WASHER, LOCK: OIL PAN MTG		EA		14	*	*	*	*	7	2
00091		0107 - ENGINE STARTING SYSTEMS										
X2 0 00092	3805-930-5758	CRANK, START U230H (66289)	B	EA		1				4	6	
X2 0 00093		CRANK, START U226A (66289)	A	EA		1				4	6	
00094		0108 - MANIFOLDS										
X1 00095	2805-399-6982	GASKET: MANIFOLD TO BLOCK (COMPONENT OF GASKET SET, STOCK NO. 2805-524-9566, SEE GROUP 0100) QC62 (66289)		EA		2				8	11	

(1) SMR CODE INDEX NO.	(2) FEDERAL STOCK NUMBER	(3) DESCRIPTION REFERENCE NO. & MFR. CODE	(4) USABLE ON CODE	(5) QTY INC IN UNIT PACK	(6) QTY INC IN UNIT	(7) 15-DAY ORGANIZATIONAL MAINTENANCE ALW (A) (B) (C) (D) 1-5 6-20 21-50 51-100	(8) ILLUS- TRATION (A) (B) FIG ITEM NO. NO.
X2 0 00096	2805-966-3547	MANIFOLD, INTAKE AND EXHAUST LD24019S1 (66289)	EA		1		8 9
0 00097	5310-012-0370	NUT, PLAIN, HEXAGON: MANIFOLD MTG	EA		4	* * * *	8 7
0 00098	4730-042-8988	PLUG, PIPE: MANIFOLD	EA		2	* * * *	8 6
X1 00099	2805-292-3984	RETAINER, PACKING: MANIFOLD (COMPONENT OF GASKET SET, STOCK NO. 2805-524-9566, SEE GROUP 0100) QB83 (66289)	EA		6		2 5
0 00100	5310-010-3342	WASHER, FLAT: MANIFOLD MTG	EA		4	* * * *	8 8
00101		GROUP 03 - FUEL SYSTEM					
00102		0301 - CARBURETOR					
0 00103	5306-616-2955	BOLT, MACHINE: CARBURETOR MTG	EA		2	* * * *	8 4
P O 00104	2910-255-2298	CARBURETOR, FLOAT (INCLUDES COMPONENTS OF GASKET SET, STOCK NO. 2910-030-3580) 10-3774 (96152)	EA		1	* 2 3 5	11 4
X1 00105	2805-624-9940	GASKET: CARBURETOR SPACER (COMPONENT OF GASKET SET, STOCK NO. 2805-524-9566, SEE GROUP 0100) (CAN BE MANUFACTURED FROM PAPER, STOCK NO. 5330-233-5845) QF91 (66289)	EA		1		8 10
P O 00106	2910-030-3580	GASKET SET: CARBURETOR 16-649 (96152)	EA		1	* 2 3 5	
X1 00107		GASKET: BOWL 16A105 (96152)	EA		1		
X1 00108	5330-291-7918	GASKET: FLOAT VALVE SEAT AND BOWL PLUG 16-4 (96152)	EA		2		

(1) SMR CODE INDEX NO.	(2) FEDERAL STOCK NUMBER	(3) DESCRIPTION REFERENCE NO. & MFR. CODE	(4) USABLE ON CODE	(4) UNIT OF ISSUE	(5) QTY INC IN UNIT PACK	(6) QTY INC IN UNIT	(7) 15-DAY ORGANIZATIONAL MAINTENANCE ALW (A) (B) (C) (D) 1-5 6-20 21-50 51-100	(8) ILLUS- TRATION (A) (B) FIG ITEM NO. NO.
X1 00109	5330-413-5347	GASKET: NOZZLE 16-456 (96152)		EA		1		
0 00110	5310-010-3320	WASHER, LOCK: CARBURETOR MTG		EA		2 * * * *	8 5	
00111		0302 - FUEL PUMPS						
0 00112	5306-225-8497	BOLT, MACHINE: FUEL PUMP TO ADAPTER		EA		2 * * * *	9 5	
X1 00113	5330-599-5966	GASKET: FUEL PUMP TO ADAPTER (COMPONENT OF GASKET SET, STOCK NO. 2805-524-9566, SEE GROUP 0100) (CAN BE MANUFACTURED FROM PAPER, STOCK NO. 5330-270-8469) GD538A (66289)		EA		1	9 3	
P O 00114	2910-339-4836	PUMP, FUEL G1195C (70955)		EA		1 * 2 3 5	9 4	
0 00115	5310-010-3320	WASHER, LOCK: FUEL PUMP TO ADAPTER		EA		2 * * * *	9 6	
00116		0304 - AIR CLEANER						
X2 0 00117		AIR CLEANER CUP ASSEMBLY MS35875-3 (96906)	A	EA		1	10 15	
X2 0 00118		CLAMP, CUP P10-1362 (18265)	A	EA		1	10 14	
X2 0 00119		CUP, INNER P17702 (18265)	A	EA		1		
X2 0 00120		CUP, OUTER P17703 (18265)	A	EA		1	10 15	
X2 0 00121		GASKET P10-1361 (18265)	A	EA		1		
X2 0 00122	2805-563-8042	BREATHER A552 (18265)		EA		1		
X2 0 00123	2940-768-7718	AIR CLEANER CUP ASSEMBLY P8723 (18265)	B	EA		1	10 15	

(1) SMR CODE INDEX NO.	(2) FEDERAL STOCK NUMBER	(3) DESCRIPTION REFERENCE NO. & MFR. CODE	(4) USABLE ON CODE UNIT OF ISSUE	(5) QTY INC IN UNIT PACK	(6) QTY INC IN UNIT PACK	(7) 15-DAY MAINTENANCE ORGANIZATIONAL ALW TRATION FIG ITEM NO.	(8) ILLUS- TRATION (A) (B) (C) (D) NO.	(9) ITEM NO.
X1 00124		BODY ASSEMBLY P8720 (18265)	B EA		1		10	5
X2 0 00125	5975-656-7401	CLAMP, CUP P2706 (18265)	B EA		1		10	14
0 00126	5306-225-8496	BOLT, MACHINE: AIR CLEANER MTG	EA		4	* * * *	10	9
X2 0 00127	2940-325-4438	CAP, AIR CLEANER 2X1674-1 (18265)	EA		1		10	6
X2 0 00128	4730-358-5965	CLAMP, HOSE AP6081 (09367)	EA		4		10	1
P O 00129	4720-288-9766	HOSE, PREFORMED: AIR CLEANER TUBE LL89 (66289)	EA		1	* 2 2 2	10	2
P O 00130	4720-807-7088	HOSE, RUBBER: AIR CLEANER TUBE LL18 (66289)	EA		1	* 2 2 2	10	4
0 00131	5310-543-2629	NUT, PLAIN, HEXAGON: AIR CLEANER MTG	EA		3	* * * *	10	7
0 00132	5310-619-3555	NUT, PLAIN, HEXAGON: STRAP	EA		3	* * * *	10	11
0 00133	5305-988-1730	SCREW, MACHINE: STRAP	EA		3	* * * *	10	13
X2 0 00134		STRAP: AIR CLEANER MTG PG512 (66289)	EA		1		10	10
X2 0 00135	3990-563-8034	TUBE, AIR CLEANER LL118 (66289)	B EA		1		10	3
X2 0 00136		TUBE, AIR CLEANER: 2 IN. OD, 1 29/32 IN. ID, 10 1/4 IN. LG LJ131 (66289)	A EA		1		10	3
0 00137	5310-010-3320	WASHER, LOCK: AIR CLEANER MTG	EA		4	* * * *	10	8
0 00138	5310-261-7341	WASHER, LOCK: STRAP	EA		3	* * * *	10	12
00139		0306 - TANKS, LINES, FITTINGS						
X2 0 00140	4730-266-0532	ADAPTER, STRAIGHT, PIPE TO TUBE: FUEL LINE AT CARBURETOR 48X4 (79470)	EA		1		11	2

(1) SMR CODE INDEX NO.	(2) FEDERAL STOCK NUMBER	(3) DESCRIPTION REFERENCE NO. & MFR. CODE	(4) USABLE ON CODE UNIT OF ISSUE	(5) QTY INC IN UNIT PACK	(6) QTY INC IN UNIT	(7) 15-DAY ORGANIZATIONAL MAINTENANCE ALW (A) (B) (C) (D) 1-5 6-20 21-50 51-100	(8) ILLUS- TRATION (A) (B) FIG ITEM NO. NO.
P O 00141	2910-141-9758	CAP, FUEL TANK 8333722 (00000)	EA		1	* 2 2 2	12 1
X2 0 00142	4820-287-4268	COCK, DRAIN: FUEL TANK	EA		1		12 11
X2 0 00143	4730-447-9277	ELBOW, PIPE: FUEL LINE AT CARBURETOR RF320-3 (66289)	EA		1		11 3
X2 0 00144	4730-277-8273	ELBOW, PIPE TO TUBE: FUEL TANK	EA		2		12 5
P O 00145	2910-492-7687	LINE ASSEMBLY: FUEL PUMP TO CARBURETOR RML201A (66289)	EA		1	* * * *	11 1
X2 0 00146	4730-230-1996	NIPPLE, PIPE: FILTER TO FUEL PUMP	EA		1		14 2
0 00147	5310-732-0558	NUT, PLAIN, HEXAGON: TANK STRAP MTG	EA		4	* * * *	12 9
0 00148	5305-543-4497	SCREW, CAP, HEXAGON HEAD: TANK STRAP MTG	EA		4	* * * *	12 2
X2 0 00149	4320-656-7471	STRAINER, FUEL TANK 19-36 (78252)	EA		1		12 12
X2 0 00150	5340-726-0224	STRAP, RETAINING 5998 (25567)	EA		2		12 3
X2 0 00151		STRIP, FELT: TANK STRAP 9490A (25567)	EA		2		12 8
X2 0 00152		STRIP, FELT: TANK SUPPORT 9490 (25567)	EA		2		12 4
X2 0 00153	2910-777-3597	TANK, FUEL, ENGINE S1453 (25567)	EA		1		12 7
P O 00154	2910-808-5664	TUBE ASSEMBLY METAL: FUEL TANK TO FUEL PUMP W04108 (25567)	EA		1		12 6
X1 00155	4730-013-7397	INVERTED NUT, TUBE COUPLING S512 (25567)	EA		2		
X1 00156	4710-277-5525	TUBE, COPPER (28 IN. REQUIRED)	EA		1		
0 00157	5310-725-5466	WASHER, LOCK: TANK STRAP MTG	EA		4	* * * *	12 10

(1) SMR CODE INDEX NO.	(2) FEDERAL STOCK NUMBER	(3) DESCRIPTION REFERENCE NO. & MFR. CODE	(4) USABLE ON CODE UNIT OF ISSUE	(5) QTY INC IN UNIT PACK	(6) QTY INC IN UNIT	(7) 15-DAY ORGANIZATIONAL MAINTENANCE ALW (A) (B) (C) (D) 1-5 6-20 21-50 51-100	(8) ILLUS- TRATION (A) (B) FIG ITEM NO. NO.
00158		0308 - ENGINE SPEED GOVERNOR AND CONTROLS					
X2 0 00159	3010-288-2655	BALL JOINT: CONTROL ROD VE674A (66289)	EA		2		13 5
0 00160 X2 0 00161	5306-225-8498 2805-213-8441	BOLT; MACHINE: GOVERNOR MTG BRACKET, GOVERNOR CONTROL PG493 (66289)	EA EA		4 1	* * * * 	13 13 13 16
X1 00162	2990-358-4789	GASKET: GOVERNOR MTG (COMPONENT OF GASKET SET, STOCK NO. 2805-524-9566, SEE GROUP 0100) (CAN BE MANUFACTURED FROM PAPER, STOCK NO. 5330-233-5847) QD615 (66289)	EA		1		13 11
P O 00163	2990-624-9956	GOVERNOR ASSEMBLY T84H1 (66289)	EA		1	* * * *	13 10
X2 0 00164	6620-211-8751	LEVER, GOVERNOR CONTROL VB175 (66289)	EA		1		13 15
0 00165 0 00166 0 00167	5310-427-5458 5310-427-5458 5310-584-5005	NUT, PLAIN, HEXAGON: CARBURETOR BALL JOINT CONTROL ROD FULCRUM LEVER	EA EA EA		1 3 1	* * * * * * * * * * * *	13 8 13 4 13 18
X2 0 00168	5310-353-5895	NUT, SLEEVE: ADJUSTING SCREW PD173A (66289)	EA		1		13 22
0 00169 X2 0 00170	5315-839-2325 2805-586-4941	PIN, COTTER: SPEED LEVER PIN, GOVERNOR LEVER, FULCRUM P1165 (66289)	EA EA		2 1	* * * * 	13 29 13 31
X2 0 00171	5315-297-1942	PIN, SHOULDER, HEADLESS: SWIVEL TC381B (66289)	EA		1		13 23
X2 0 00172	5315-272-6827	PIN, STRAIGHT, THREADED P1115E (66289)	EA		1		13 28
X2 0 00173	4730-011-8831	PLUG, PIPE: GOVERNOR	EA		1		13 9

(1) SMR CODE INDEX NO.	(2) FEDERAL STOCK NUMBER	(3) DESCRIPTION REFERENCE NO. & MFR. CODE	(4) USABLE ON CODE UNIT OF ISSUE	(5) QTY INC IN UNIT PACK	(6) QTY INC IN UNIT	(7) 15-DAY ORGANIZATIONAL MAINTENANCE ALW (A) (B) (C) (D) 1-5 6-20 21-50 51-100	(8) ILLUS- TRATION (A) (B) FIG ITEM NO. NO.
X2 0 00174		RETAINER, SPRING PK121 (66289)	EA		1		13 24
X2 0 00175	2990-966-3573	ROD, CONTROL: GOVERNOR TO CARBURETOR VE689A (66289)	EA		1		13 3
0 00176 0 00177	5305-068-0500 5305-984-6191	SCREW, CAP, HEXAGON HEAD: BRACKET MTG SCREW, MACHINE: SWIVEL	EA EA		3 1	* * * * * * * *	13 19 13 21
P O 00178	2995-197-5863	SPRING, HELICAL, COMPRESSION PM111-1 (66289)	EA		1	* * * *	13 30
P O 00179	2990-201-2031	SPRING, HELICAL, EXTENSION: GOVERNOR PM76 (66289)	EA		1	* * * *	13 27
X2 0 00180	2805-091-8703	SWIVEL, BLOCK VE240-2 (66289)	EA		1		13 20
0 00181 0 00182 0 00183	5310-261-7341 5310-596-4922 5310-010-3320	WASHER, LOCK: BRACKET MTG WASHER, LOCK: CONTROL ROD WASHER, GOVERNOR MTG	EA EA EA		3 2 4	* * * * * * * * * * * *	13 17 13 7 13 12
00184		0309 - FUEL FILTERS					
X2 0 00185	2910-450-8524	STRAINER ASSEMBLY, FUEL 0W476T (78480)	EA		1		14
X1 00186	2910-382-8786	BAIL ASSEMBLY 0W447 (78480)	EA		1		14 6
P O 00187	2910-354-3834	BOWL, SEDIMENT: METAL 06137 (78480)	EA		1	* * 2 2	14 5
P O 00188	2910-142-2738	ELEMENT, FUEL STRAINER 0W352 (78480)	EA		1	2 2 4 8	14 4
X1 00189	2910-429-3539	HEAD 0W362 (78480)	EA		1		14 1
P O 00190	5330-187-2962	WASHER, NONMETALLIC: BOWL 06096 (78480)	EA		1	2 5 10 21	14 3

(1) SMR CODE INDEX NO.	(2) FEDERAL STOCK NUMBER	(3) DESCRIPTION REFERENCE NO. & MFR. CODE	(4) USABLE ON CODE UNIT OF ISSUE	(5) QTY INC IN UNIT PACK	(6) QTY INC IN UNIT	(7) 15-DAY ORGANIZATIONAL MAINTENANCE ALW (A) (B) (C) (D) 1-5 6-20 21-50 51-100	(8) ILLUS- TRATION (A) (B) FIG ITEM NO. NO.
00191		0311 - ENGINE STARTING AIDS					
X2 0 00192	2910-777-7183	FUEL PUMP ADAPTER TF96-4 (66289)	EA		1		9 2
X1 00193	2805-366-6351	GASKET: ADAPTER TO BLOCK (COMPONENT OF GASKET SET, STOCK NO. 2805-524-9566, SEE GROUP 0100) (CAN BE MANUFACTURED FROM PAPER, STOCK NO. 5330-270-8469) QD67 (66289)	EA		1		9 7
0 00194	5305-983-8084	SCREW, CAP, SOCKET HEAD: ADAPTER MTG	EA		2	* * * *	9 1
0 00195	5310-261-7341	WASHER, LOCK: ADAPTER MTG	EA		3	* * * *	9 8
00196		0312 - ACCELERATOR, THROTTLE, OR CHOKE CONTROLS					
X2 0 00197	4320-656-7457	BRACKET, CONTROL 6031 (25567)	EA		1		22 10
X2 0 00198	2910-656-7478	CABLE, THROTTLE S886 (25567)	EA		1		13 14
X2 0 00199	2990-563-8056	CONTROL ASSEMBLY, PUSH-PULL: CHOKE VE575B (66289)	EA		1		17 2
00200		GROUP 04 - EXHAUST SYSTEM					
00201		0401 - MUFFLER AND PIPES					
X2 0 00202		CAP, WEATHER S1246 (25567)	EA		1		8 2
X2 0 00203	2990-656-7482	CLAMP, MUFFLER S933 (25567)	EA		1		8 3
X2 0 00204	2990-571-0454	MUFFLER, ENGINE: 5486N (76700)	EA		1		8 1
X2 0 00205	4730-186-0418	NIPPLE, PIPE: MUFFLER TO MANIFOLD	EA		1		8 16

(1) SMR CODE INDEX NO.	(2) FEDERAL STOCK NUMBER	(3) DESCRIPTION REFERENCE NO. & MFR. CODE	(4) USABLE ON CODE UNIT OF ISSUE	(5) QTY INC IN UNIT PACK	(6) QTY INC IN UNIT	(7) 15-DAY ORGANIZATIONAL MAINTENANCE ALW (A) (B) (C) (D) 1-5 6-20 21-50 51-100	(8) ILLUS- TRATION (A) (B) FIG ITEM NO. NO.
00206		GROUP 05 - COOLING SYSTEM					
00207		0502 - COWLING, DEFLECTORS, AIR DUCT, SHROUD					
0 00208 X2 0 00209	5306-225-8494	BOLT, MACHINE: FLYWHEEL SHROUD	EA	4	*	* * * *	15 8
X2 0 00210	2805-353-5929	COVER, AIR SHROUD: LH SIDE SE127A (66289)	EA	1			15 9
X2 0 00211	2805-353-5924	COVER, AIR SHROUD, REAR RIGHT SE125 (66289)	EA	1			15 14
X2 0 00212		COVER, STARTER PAD BH116 (66289)	A EA	1			
X2 0 00213	2805-353-5930	DEFLECTOR, CYLINDER HEAT: RH SIDE SE128B (66289)	EA	1			15 2
X2 0 00214	2805-353-5931	DEFLECTOR, CYLINDER HEAT: LH SIDE SE128C (66289)	EA	1			15 15
0 00215 0 00216 0 00217 0 00218 X2 0 00219	2805-424-2815	SCREEN, FLYWHEEL SE48 (66289)	EA	1			4 3
0 00215 0 00216 0 00217 0 00218 X2 0 00219	5305-068-0498	SCREW, CAP, HEXAGON HEAD: DEFLECTOR AND SHROUD	EA	8	*	* * * *	15 5
0 00216 0 00217 0 00218 X2 0 00219	5305-296-3206	SCREW, CAP, HEXAGON HEAD: FLYWHEEL SHROUD	EA	2	*	* * * *	15 16
0 00217 0 00218 X2 0 00219	5305-988-1723	SCREW, MACHINE: HEAT DEFLECTOR AND REAR SHROUD	EA	6	*	* * * *	15 11
0 00218 X2 0 00219	5305-988-1721	SCREW, MACHINE: SHROUD SCREEN	EA	30	*	* * * *	15 3
X2 0 00220	2805-353-5928	SHROUD, CYLINDER HEAD: RH SIDE SE127 (66289)	EA	1			15 1
X2 0 00221		SHROUD, FLYWHEEL SE124L (66289)	B EA	1			15 6
X2 0 00222		SHROUD, FLYWHEEL SE124AG (66289)	A EA	1			15 6
X2 0 00223	2805-353-5927	SHROUD, LOWER CYLINDER: LH SIDE SE126A (66289)	EA	1			15 10
X2 0 00223	2805-353-5926	SHROUD, LOWER CYLINDER: RH SIDE SE126 (66289)	EA	1			15 13

(1) SMR CODE INDEX NO.	(2) FEDERAL STOCK NUMBER	(3) DESCRIPTION REFERENCE NO. & MFR. CODE	(4) USABLE ON CODE UNIT OF ISSUE	(5) QTY INC IN UNIT PACK	(6) QTY INC IN UNIT	(7) 15-DAY MAINTENANCE ALW (A) 1-5 (B) 6-20 (C) 21-50 (D) 51-100	(8) ORGANIZATIONAL ALW (A) (B) (C) (D)	(8) ILLUS- TRATION (A) (B) FIG ITEM NO.
X2 0 00224	2805-353-5925	SHROUD, REAR COVER: LH SIDE SE125A (66289)	EA		1			15 12
0 00225	5310-582-9927	WASHER, LOCK: AIR SHROUD MTG	EA		4	* * * *		15 7
0 00226	5310-261-7341	WASHER, LOCK: DEFLECTOR, SCREEN SHROUD	EA		40	* * * *		15 4
00227		GROUP 06 - ELECTRICAL SYSTEM (ENGINE AND VEHICULAR)						
00228		0605 - IGNITION COMPONENTS						
P O 00229	2920-524-9572	CABLE, SHIELDED, SPARK PLUG: NO. 1 YD213H (66289)	B EA		1	2 2 4 8		16 13
P O 00230	2920-941-6108	CABLE, SHIELDED, SPARK PLUG: NO. 1 AND 4 MS51011-13 (96906)	A EA		2	2 2 4 8		16 9
P O 00231	2920-524-9573	CABLE, SHIELDED, SPARK PLUG: NO. 2 YD213J (66289)	B EA		1	2 2 4 8		16 12
P O 00232	2920-924-2042	CABLE, SHIELDED, SPARK PLUG: NO. 2 MS51011-14 (96906)	A EA		1	2 2 4 8		16 12
P O 00233	2920-524-9574	CABLE, SHIELDED, SPARK PLUG: NO. 3 YD213K (66289)	B EA		1	2 2 4 8		16 11
P O 00234	2920-887-1289	CABLE, SHIELDED, SPARK PLUG: NO. 3 MS51011-10 (96906)	A EA		1	2 2 4 8		16 11
P O 00235	2920-524-9578	CABLE, SHIELDED, SPARK PLUG: NO. 4 YD213L (66289)	B EA		1	2 2 4 8		16 9
X2 0 00236	2920-309-8057	CLAMP, ELECTRICAL: SPARK PLUG CABLE PG630 (66289)	EA		4			16 10
X1 00237	2920-360-8381	GASKET: MAGNETO MTG (COMPONENT OF GASKET SET, STOCK NO. 2805-524-9566, SEE GROUP 0100) (CAN BE MANUFACTURED FROM PAPER, STOCK NO. 5330-270-8469) QD616 (66289)	EA		1			16 6
P O 00238	2920-961-6160	GEAR, HELICAL: MAGNETO DRIVE, 27 TEETH GD103-1 (66289)	EA		1	* * * *		16 5

(1) SMR CODE INDEX NO.	(2) FEDERAL STOCK NUMBER	(3) DESCRIPTION REFERENCE NO. & MFR. CODE	(4) USABLE ON CODE UNIT OF ISSUE	(5) QTY INC IN UNIT PACK	(6) QTY INC IN UNIT	(7) 15-DAY ORGANIZATIONAL MAINTENANCE ALW (A) (B) (C) (D) 1-5 6-20 21-50 51-100	(8) ILLUS- TRATION (A) (B) FIG ITEM NO. NO.
P O R 00239	2920-656-7336	MAGNETO ASSEMBLY FMXZE4B7-4 (82796)					
0 00240	5310-543-5653	NUT, PLAIN, HEXAGON: MAGNETO MTG	EA		1	* 2 2 2	16 4
0 00241	5310-584-8732	NUT, PLAIN, HEXAGON: MAGNETO MTG	EA	1		* * *	16 7
0 00242	5305-269-3217	SCREW, CAP, HEXAGON HEAD: MAGNETO MTG	EA		1	* * *	16 14
P O 00243	2920-293-5212	SPARK PLUG MS35911-1 (96906)	B EA		4	5 10 21 42	2 11
P O 00244	2920-810-7082	SPARK PLUG MS51009-1 (96906)	A EA		4	5 10 21 42	2 11
0 00245	5307-737-5503	STUD, PLAIN: MAGNETO MTG	EA		1	* * *	16 1
0 00246	5310-595-7237	WASHER, LOCK: MAGNETO MTG	EA		2	* * *	16 2
0 00247	5310-061-1258	WASHER, LOCK: MAGNETO MTG	EA		1	* * *	16 15
00248		0607 - INSTRUMENT OR ENGINE CONTROL PANEL					
X2 0 00249	2805-647-1914	BRACKET VE647 (66289)	EA		1		17 3
P O 00250	6150-679-3593	LEAD, ELECTRICAL: MAGNETO TO IGNITION SWITCH YL135 (66289)	EA		1		17 1
X1 00251	5975-284-9305	CABLE, NIPPLE, ELECTRICAL	EA		2		
X1 00252	5940-050-7106	TERMINAL, LUG	EA		2		
X1 00253	6145-284-0660	WIRE, ELECTRICAL	EA		2		
X2 0 00254		PANEL ASSEMBLY, INSTRUMENT 7446 (25567)	EA		1		
X2 0 00255	4320-647-1937	BRACKET 7515 (25567)	EA		1		20 4

(1) SMR CODE INDEX NO.	(2) FEDERAL STOCK NUMBER	(3) DESCRIPTION REFERENCE NO. & MFR. CODE	(4) USABLE ON CODE UNIT OF ISSUE	(5) QTY INC IN UNIT PACK	(6) QTY INC IN UNIT	(7) 15-DAY ORGANIZATIONAL MAINTENANCE ALW (A) (B) (C) (D) 1-5 6-20 21-50 51-100	(8) ILLUS- TRATION (A) (B) FIG ITEM NO. NO.
X2 0 00256	4320-647-1941	MOUNT, PANEL: SIDE 74468 (25567)	EA		2		20 33
X2 0 00257	4320-647-1940	MOUNT, PANEL: TOP AND BOTTOM 7446C (25567)	EA		2		20 6
0 00258	5310-012-0361	NUT, PLAIN, HEXAGON: FRAME MTG	EA		20	* * * *	20 1
X2 0 00259	4320-647-1939	PANEL, INSTRUMENT 7446A (25567)	EA		1		20 17
X2 0 00260		PANEL, CONTROL VE439G (66289)	A EA		1		
0 00261	5305-984-6210	SCREW, MACHINE: FRAME AND PANEL MTG	EA		18	* * * *	20 20
0 00262	5305-012-0222	SCREW, MACHINE: FRAME TO MOUNT	EA		2	* * * *	20 5
0 00263	5305-277-5978	SCREW, TAPPING, THREAD FORMING: PANEL MTG	EA		4	* * * *	17 6
P O 00264	2920-876-8346	SWITCH, IGNITION YC9F (66289)	EA		1	* * 2 2	17 4
0 00265	5310-595-6509	WASHER, FLAT: FRAME AND PANEL MTG	EA		20	* * * *	20 3
0 00266	5310-045-3296	WASHER, LOCK: FRAME AND PANEL MTG	EA		20	* * * *	20 2
00267		0615 - RADIO INTERFERENCE SUPPRESSION					
P O 00268	2920-00-279-6104	LEAD, ELECTRICAL: GROUND YL191 (66289)	EA		1	* * * *	16 8
X2 0 00269		GROUND ROD ASSEMBLY A13763 (25567)	EA		1		
X2 0 00270		ROD, GROUND S1772 (25567)	EA		2		
X2 0 00271		WIRE, ASSEMBLY 9619 (25567)	EA		2		

(1) SMR CODE INDEX NO.	(2) FEDERAL STOCK NUMBER	(3) DESCRIPTION REFERENCE NO. & MFR. CODE	(4) USABLE ON CODE UNIT OF ISSUE	(5) QTY INC IN UNIT PACK	(6) QTY INC IN UNIT	(7) 15-DAY ORGANIZATIONAL MAINTENANCE ALW (A) (B) (C) (D) 1-5 6-20 21-50 51-100	(8) ILLUS- TRATION (A) (B) FIG ITEM NO. NO.
00272		GROUP 11 - REAR AXLE					
00273		1100 - REAR AXLE ASSEMBLY					
X2 0 00274		AXLE, TRAILER: W/SPRINGS S926 (25567)	EA		1		18
0 00275	5305-637-8557	BOLT, MACHINE: TOP AND BOTTOM BRACKET	EA		4	* * * *	18 6
X2 0 00276		BRACKET: BASE, LH 72-801 (25567)	EA		1		18 10
X2 0 00277		BRACKET: BASE, RH 72-802 (25567)	EA		1		18 7
X2 0 00278		BRACKET: TOP, LH 72-823 (25567)	EA		1		18 11
X2 0 00279		BRACKET: TOP, RH 72-824 (25567)	EA		1		18 14
X2 0 00280		COLLAR: AXLE 71-100 (25567)	EA		2		18 15
X2 0 00281		INSERT: AXLE BRACKET 030 (25567)	EA		2		18 8
X2 0 00282	5310-655-9544	NUT, PLAIN, HEXAGON: TOP AND BOTTOM BRACKET PD11 (25567)	EA		4		18 13
X2 0 00283		NUT: WHEEL BEARING MS35690-604 (96906)	EA		4		18 22
X2 0 00284		WASHER: BEARING NUT LOCK 16-5596 (25567)	EA		2		18 23
0 00285	5310-261-7340	WASHER, LOCK: TOP AND BOTTOM BRACKET	EA		4	* * * *	18 12
X2 0 00286		WASHER: TONGUE 16-5594 (25567)	EA		2		18 21
0 00287	5306-042-6936	BOLT, MACHINE: BRACKET TO FRAME	EA		4	* * * *	18 3
0 00288	5310-816-1030	NUT, PLAIN, HEXAGON: BRACKET MTG	EA		4	* * * *	18 4
0 00289	5310-584-5272	WASHER, LOCK: BRACKET MTG	EA		4	* * * *	18 5

(1) SMR CODE INDEX NO.	(2) FEDERAL STOCK NUMBER	(3) DESCRIPTION REFERENCE NO. & MFR. CODE	(4) USABLE ON CODE UNIT OF ISSUE	(5) QTY INC IN UNIT PACK	(6) QTY INC IN UNIT	(7) 15-DAY MAINTENANCE ORGANIZATIONAL ALW (A) (B) (C) (D)	(8) ILLUS- TRATION (A) (B) FIG ITEM NO. NO.
00290		GROUP 13 - WHEELS					
00291		1311 - WHEEL ASSEMBLY					
X2 0 00292	2530-656-7537	WHEEL ASSEMBLY S708 (25567)	EA	2			
P 0 00293	3110-100-3526	CONE AND ROLLERS, TAPERED ROLLER BEARING: WHEEL 18590 (33116)	EA	4	* * 2 2	18 17	
X2 0 00294	1055-033-6209	COVER, PLATE 27854 (33116)	EA	2		18 25	
P 0 00295	3110-100-0532	CUP, TAPERED ROLLER BEARING 18520 (33116)	EA	4	* * 2 2	18 18	
P 0 00296	2530-727-1109	GASKET: CAP TO HUB 33958 (33116)	EA	2	* 2 2 3	18 24	
X2 0 00297	2530-352-6960	HUB AND BOLTS 33552 (33116)	EA	2			
P 0 00298	5306-206-1555	BOLT, RIBBED SHOULDER: WHEEL MTG 33550 (33116)	EA	10	* 2 2 3	18 19	
X1 00299	2530-737-5142	HUB, WHEEL, FRONT 33546 (33116)	EA	2		18 20	
P 0 00300	5310-523-2405	NUT, CONE SEAT, HEXAGON: WHEEL 24575 (33116)	EA	10	* 2 4 7	18 29	
0 00301	5305-269-3209	SCREW,CAP,HEXAGON HEAD: CAP MTG	EA	12	* * * *	18 27	
P 0 00302	5330-285-6378	SEAL, PLAIN ENCASED 27853 (33116)	EA	2	* 2 2 3	18 16	
0 00303	5310-637-9541	WASHER, LOCK: CAP MTG	EA	12	* * * *	18 26	
X2 0 00304	2530-287-2314	WHEEL, PNEUMATIC TUBE 33995 (33116)	EA	2		18 28	
00305		1313 - TIRES, TUBES					
P 0 00306	2610-269-7332	INNER TUBE, PNEUMATIC TIRE MS35392-8 (96906)	EA	2	* * 2 2	18 1	

(1) SMR CODE INDEX NO.	(2) FEDERAL STOCK NUMBER	(3) DESCRIPTION REFERENCE NO. & MFR. CODE	(4) USABLE ON CODE UNIT OF ISSUE	(5) QTY INC IN UNIT PACK	(6) QTY INC IN UNIT	(7) 15-DAY MAINTENANCE ORGANIZATIONAL ALW (A) (B) (C) (D)	(8) ILLUS- TRATION (A) (B) FIG ITEM NO. NO.
P 0 00307	2610-269-9586	TIRE, PNEUMATIC MS35388-9 (96906)	EA		2	* * 2 2	18 2
00308		GROUP 15 - FRAME, TOWING ATTACHMENTS AND DRAWBAR					
00309		1501 - FRAME ASSEMBLY					
X2 0 00310		BAIL, LIFTING 6001B (25567)	EA		1		22 2
0 00311	5306-225-9081	BOLT, MACHINE: GROUNDING CONNECTION	EA		1	* * * *	19 25
0 00312	5310-012-0376	NUT, PLAIN, HEXAGON: GROUNDING CONNECTION	EA		2	* * * *	19 26
0 00313	5310-732-0558	NUT, PLAIN, HEXAGON: SUPPORT MTG	EA		2	* * * *	22 5
0 00314	5305-269-3211	SCREW, CAP, HEXAGON HEAD: SUPPORT MTG	EA		2	* * * *	22 1
X2 0 00315		SUPPORT: LIFTING BAIL 6002 (25567)	EA		1		22 3
0 00316	5310-017-8537	WASHER, LOCK: GROUNDING CONNECTION	EA		2	* * * *	19 27
0 00317	5310-637-9541	WASHER, LOCK: SUPPORT MTG	EA		2	* * * *	22 4
00318		1503 - PINTLES AND TOWING ATTACHMENTS					
X2 0 00319		CHAIN, SAFETY 11706 (25567)	EA		3	SEE GRP 9901	19 23
X2 0 00320	2540-835-9039	HOOK ASSEMBLY: PINTLE S791 (25567)	EA		1		
X2 0 00321	4730-729-7068	FITTING, LUBRICATION 5003 (36251)	EA		2		19 5
X2 0 00322	2540-390-5529	HOOK, PINTLE	EA		1		
X2 0 00323	2540-215-8109	LATCH, HOOK T63-0 (74410)	EA		1		19 2
X2 0 00324	2540-752-4313	LATCH, PINTLE HOOK T62-0 (74410)	EA		1		19 41

(1) SMR CODE INDEX NO.	(2) FEDERAL STOCK NUMBER	(3) DESCRIPTION REFERENCE NO. & MFR. CODE	(4) USABLE ON CODE UNIT OF ISSUE	(5) QTY INC IN UNIT PACK	(6) QTY INC IN UNIT PACK	(7) 15-DAY ORGANIZATIONAL MAINTENANCE ALW (A) (B) (C) (D) 1-5 6-20 21-50 51-100	(8) ILLUS- TRATION (A) (B) FIG ITEM NO. NO.
X2 0 00325	2540-213-7128	PIN: LATCH T640 (74410)	EA		1		19 6
X2 0 00326	5315-830-8824	PIN, STRAIGHT, HEADED: LATCH T67-0 (74410)	EA		1		19 3
X2 0 00327	5340-656-7470	RING, RETAINING T104 (74410)	EA		4		19 4
X2 0 00328	2540-706-2003	SPRING, HELICAL, COMPRESSION: LATCH 78 (74410)	EA		1		19 1
X2 0 00329	5315-656-7465	PIN, ANCHOR 6010 (25567)	EA		1		
X1 00330		PIN, ANCHOR B1214 (25567)	EA		1		19 20
X1 00331	3990-566-8860	PIN, SNAP S884 (25567)	EA		1		19 21
X1 00332	5340-563-8014	RING, RETAINING 5228 (25567)	EA		1		19 22
X2 0 00333	5340-656-7464	RING: SAFETY CHAIN S1537 (25567)	EA		3	SEE GRP 9901	19 24
0 00334	5305-018-0173	SCREW, CAP, HEXAGON HEAD: HOOK ASSEMBLY MTG	EA		4	* * * *	19 40
X2 0 00335	2540-932-9747	TONGUE, TOWING 5462A (25567)	EA		1		19 28
0 00336	5310-584-5272	WASHER, LOCK: HOOK ASSEMBLY MTG	EA		4	* * * *	19 39
00337		1507 - LANDING GEAR					
0 00338	5306-550-3860	BOLT, MACHINE: STAND MTG	EA		2	* * * *	19 37
X2 0 00339	2540-720-1906	BUSHING, SLEEVE, STAND 6114 (25567)	EA		2		19 34
X2 0 00340		CHAIN, SAFETY 11706 (25567)	EA		4	SEE GRP 9901	19 23

(1) SMR CODE INDEX NO.	(2) FEDERAL STOCK NUMBER	(3) DESCRIPTION REFERENCE NO. & MFR. CODE	(4) USABLE ON CODE	(5) UNIT OF ISSUE	(6) QTY INC IN UNIT PACK	(7) 15-DAY ORGANIZATIONAL MAINTENANCE ALW (A) (B) (C) (D) 1-5 6-20 21-50 51-100	(8) ILLUS- TRATION (A) (B) FIG ITEM NO. NO.
0 00341 X2 0 00342	5310-763-8920 2540-720-1890	NUT, PLAIN, HEXAGON: STAND MTG PIN ASSEMBLY, STAND 6137 (25567)		EA	2	* * * *	19 32
X1 00343	5305-563-8055	SCREW B1206 (25567)		EA	2		19 36
X1 00344	3990-566-8860	PIN, STRAP S884 (25567)		EA	2		19 21
X1 00345	5340-563-8014	RING, RETAINING 5228 (25567)		EA	2		19 22
X2 0 00346	5340-656-7464	RING S1537 (25567)		EA	6	SEE GRP 9901	
X2 0 00347	4930-711-5604	STAND, FRONT 5463 (25567)		EA	1		19 29
0 00348	5310-012-1574	WASHER, LOCK: STAND MTG		EA	2	* * * *	19 33
00349		GROUP 18 - BODY, CAB, HOOD, HULL ASSEMBLIES					
00350		1808 - BOXES					
X2 0 00351		BOX ASSEMBLY, TOOL 9698 (25567)		EA	1		19 16
X2 0 00352		BRACKET, SUPPORT: TOOL BOX 9733 (25567)		EA	2		19 17
X2 0 00353		CHAIN, SAFETY 11706 (25567)		EA	2	SEE GRP 9901	19 23
0 00354 X2 0 00355	5310-732-0558	NUT, PLAIN, HEXAGON: TOOL BOX AND SUPPORT MTG PIN, ANCHOR: GROUND ROD 6010A (25567)		EA	6	* * * *	19 19
X1 00356		PIN, ANCHOR B1209-1-2 (25567)		EA	1		19 38
X1 00357	3990-566-8860	PIN, SNAP S884 (25567)		EA	1		19 21

(1) SMR CODE INDEX NO.	(2) FEDERAL STOCK NUMBER	(3) DESCRIPTION REFERENCE NO. & MFR. CODE	(4) USABLE ON CODE	(5) UNIT OF ISSUE	(6) QTY INC IN UNIT PACK	(7) 15-DAY ORGANIZATIONAL MAINTENANCE ALW (A) (B) (C) (D)	(8) ILLUS- TRATION (A) (B) FIG ITEM NO. NO.
X1 00358		RING, PULL 5228 (25567)		EA	1		19 22
X2 0 00359	5340-656-7464	RING S1537 (25567)		EA	3	SEE GRP 9901	19 24
0 00360	5305-269-3211	SCREW, CAP, HEXAGON HEAD: TOOL BOX AND SUPPORT MTG		EA	6	* * * *	19 12
0 00361	5310-725-5466	WASHER, LOCK: TOOL BOX AND SUPPORT MTG		EA	6	* * * *	19 18
00362		GROUP 22 - BODY, CHASSIS OR HULL, AND ACCESSORY ITEMS					
00363		2201 - CANVAS ITEMS					
X2 0 00364	4320-012-4463	COVER, CANVAS S1508 (25567)		EA	1		
00365		2202 - ACCESSORY ITEMS					
0 00366	5310-584-5005	NUT, PLAIN, HEXAGON: REFLECTOR MTG		EA	8	* * * *	19 10
P 0 00367	9905-734-5904	REFLECTOR: AMBER MSS9905-5 (08288)		EA	2	* 2 2 3	19 31
P 0 00368	9905-734-5903	REFLECTOR: RUBY S673 (25567)		EA	2	* 2 2 3	19 8
0 00369	5305-988-1728	SCREW, MACHINE: REFLECTOR MTG		EA	4	* * * *	19 30
0 00370	5305-988-1725	SCREW, MACHINE: REFLECTOR MTG		EA	4	* * * *	19 7
X2 0 00371	6220-656-7468	SPACER; REFLECTOR 6007 (25567)		EA	2		19 35
0 00372	5310-012-0380	WASHER, LOCK: REFLECTOR MTG		EA	8	* * * *	19 9
00373		2210 - DATA PLATES					
X2 0 00374		PLATE, IDENTIFICATION 2613DB (25567)	A	EA	1		
X2 0 00375		PLATE, IDENTIFICATION 2613AB (25567)	A	EA	1		

(1) SMR CODE INDEX NO.	(2) FEDERAL STOCK NUMBER	(3) DESCRIPTION REFERENCE NO. & MFR. CODE	(4) USABLE ON CODE UNIT OF ISSUE	(5) QTY INC IN UNIT PACK	(6) QTY INC IN UNIT	(7) 15-DAY MAINTENANCE ORGANIZATIONAL ALW (A) (B) (C) (D)	(8) ILLUS- TRATION (A) (B) FIG ITEM NO. NO.
X2 0 00376	2805-647-1945	PLATE, IDENTIFICATION: ENGINE VACUUM 2613BXC (25567)	B EA		1		20 19
X2 0 00377		PLATE, IDENTIFICATION: PUMP PRESSURE 2612BXB (25567)	B EA		1		20 22
X2 0 00378		PLATE, IDENTIFICATION: PUMP PRESSURE 2613BXB (25567)	A EA		1		20 22
X2 0 00379		PLATE, IDENTIFICATION: PUMP SUCTION 2613BXA (25567)	EA		1		20 27
X2 0 00380		PLATE, IGNITION SD108 (66289)	EA		1		17 5
X2 0 00381		PLATE, INSTRUCTION SD197A (66289)	B EA		1		
X2 0 00382	2805-428-2191	PLATE, INSTRUCTION SD115N (66289)	B EA		1		
X2 0 00383		PLATE, INSTRUCTION SD1978 (25567)	A EA		1		
X2 0 00384		PLATE, INSTRUCTION AND NAME SD252 (66289)	A EA		1		
0 00385	5305-011-3231	SCREW, DRIVE: PLATE MTG	EA		1	* * * *	
0 00386	5305-879-3825	SCREW, TAPPING, THREAD FORMING: PLATE MTG	EA		7	* * * *	
00387		GROUP 47 - GAGES					
00388		4701 - INSTRUMENTS,SPEED AND DISTANCE					
X2 0 00389		ADAPTER, SHAFT DRIVE 777D (25567)	EA		1		13 26
A 0 00390		NUT, ASSEMBLED WASHER: TACHOMETER MTG	EA		3		
0 00391	5310-012-0622	NUT, PLAIN, HEXAGON	EA		3	* * * *	20 9
0 00392	5310-550-0285	WASHER, LOCK	EA		3	* * * *	20 10
0 00393	5305-984-6193	SCREW, MACHINE: TACHOMETER MTG	EA		3	* * * *	20 16

(1) SMR CODE INDEX NO.	(2) FEDERAL STOCK NUMBER	(3) DESCRIPTION REFERENCE NO. & MFR. CODE	(4) USABLE ON CODE UNIT OF ISSUE	(5) QTY INC IN UNIT PACK	(6) QTY INC IN UNIT	(7) 15-DAY MAINTENANCE ORGANIZATIONAL ALW FIG NO.	(8) ILLUS- TRATION (A) NO.	(9) 1-5	(10) 6-20	(11) 21-50	(12) 51-100	(13) ILLUS- TRATION (B) ITEM NO.
P 0 00394	6680-331-7887	SHAFT ASSEMBLY, FLEXIBLE RS51A (66289)	EA		1	*	2	2	2	13	25	
P 0 00395	6680-514-4094	TACHOMETER 567AS (25567)	EA		1	*	2	2	2	20	12	
00396		4702 - GAGES, MOUNTINGS, LINES AND FITTINGS										
X2 0 00397	4730-656-7484	ADAPTER, STRAIGHT, PIPE TO HOSE: GAGE S925 (25567)	EA		2					20	24	
X2 0 00398	4730-090-0832	ADAPTER, STRAIGHT, PIPE TO TUBE: OIL PRESSURE LINE TO GAGE 125620 (00000)	EA		1					20	8	
X2 0 00399		ADAPTER, STRAIGHT, PIPE TO TUBE: OIL PRESSURE LINE TO GAGE A S577 (25567)	EA		1					20	8	
X2 0 00400	4730-277-1895	BUSHING, PIPE: OIL PRESSURE HOSE	EA		1					20	31	
X2 0 00401		BUSHING, PIPE: OIL PRESSURE LINE A0402 (25567)	EA	A	1					20	31	
X2 0 00402	4320-656-7519	CLIP, HOSE: OIL PRESSURE LINE 6006 (25567)	EA		1					20	32	
X2 0 00403	4730-287-1614	COUPLING, PIPE: GAGE LINE	EA		1					8	15	
X2 0 00404	4730-277-8265	ELBOW, PIPE: GAGE HOSE	EA		2					20	7	
X2 0 00405	4730-249-9332	ELBOW, PIPE: GAGE HOSE	EA		1					20	28	
X2 0 00406	4730-249-1474	ELBOW, PIPE: GAGE LINE 7412521 (00000)	EA		1					8	13	
P 0 00407	6685-718-9985	GAGE, PRESSURE, DIAL INDICATOR S714 (25567)	EA		1	*	2	2	3	20	26	
P 0 00408	3990-563-8012	GAGE, PRESSURE, DIAL INDICATOR: ENGINE OIL RS11C (66289)	EA		1	*	2	2	3	20	21	
P 0 00409	6685-766-8173	GAGE, VACUUM, DIAL INDICATOR S715 (25567)	EA		2	*	2	2	3	20	18	
X2 0 00410	4730-533-4840	ADAPTER, STRAIGHT, TUBE TO HOSE 00904-604 (79470)	EA		1							

(1) SMR CODE INDEX NO.	(2) FEDERAL STOCK NUMBER	(3) DESCRIPTION REFERENCE NO. & MFR. CODE	(4) USABLE ON CODE UNIT OF ISSUE	(5) QTY INC IN UNIT PACK	(6) QTY INC IN UNIT	(7) 15-DAY ORGANIZATIONAL MAINTENANCE ALW (A) (B) (C) (D)	(8) ILLUS- TRATION (A) (B) FIG ITEM NO. NO.
X2 0 00411		FITTING, PIPE 00904-102 (79470)	EA		1	SEE GRP 9901	
P 0 00412	4720-203-1032	HOSE, RUBBER	FT			SEE GRP 9501	
P 0 00413	4720-656-7456	HOSE ASSEMBLY; RUBBER: GAGE TO MANIFOLD S515 (25567)	EA	3	*	2 2 2	20 25
X1 00414	4730-533-4840	ADAPTER, STRAIGHT, TUBE TO HOSE 00904-604 (79470)	EA	2			
X1 00415		FITTING, PIPE 00904-102 (79470)	EA	2			
X1 00416	4720-203-1032	HOSE, RUBBER	EA	1			
P 0 00417	6685-766-8175	HOSE ASSEMBLY, RUBBER: OIL GAGE TO GAGE S1003 (25567)	EA	1	*	2 2 2	20 11
X1 00418	4730-533-4840	ADAPTER, STRAIGHT, TUBE TO HOSE 00904-604 (79470)	EA	1			
X1 00419		FITTING, PIPE 00904-102 (79470)	EA	1			
X1 00420	4720-203-1032	HOSE, RUBBER	EA	1			
X2 0 00421	4730-196-1963	NIPPLE, PIPE: GAGE LINE	EA	1			8 12
X2 0 00422	4730-196-1538	NIPPLE, PIPE: GAGE LINE	EA	1			8 14
0 00423	4730-277-8265	NIPPLE, PIPE: OIL PRESSURE LINE	EA	1	*	* * *	20 29
0 00424	5310-011-3739	NUT, PLAIN, HEXAGON: GAGE CLAMP	EA	2	*	* * *	20 13
0 00425	5310-176-8137	NUT, PLAIN, HEXAGON: GAGE MTG	EA	6	*	* * *	20 1
X2 0 00426		PLATE, CLAMP 2550-38 (25567)	EA	1			20 15
0 00427	5305-011-0500	SCREW, MACHINE: GAGE MTG	EA	9	*	* * *	20 20
X2 0 00428		SNUBBER, GAGE S873 (25567)	EA	2			20 23

(1) SMR CODE INDEX NO.	(2) FEDERAL STOCK NUMBER	(3) DESCRIPTION REFERENCE NO. & MFR. CODE	(4) USABLE ON CODE UNIT OF ISSUE	(5) QTY INC IN UNIT PACK	(6) QTY INC IN UNIT	(7) 15-DAY ORGANIZATIONAL MAINTENANCE ALW (A) (B) (C) (D) 1-5 6-20 21-50 51-100	(8) ILLUS- TRATION (A) (B) FIG ITEM NO. NO.
X2 0 00429		TEE,PIPE:OIL PRESSURE LINE TO GAGE,IRON,1/8-27 THD SIZE1/4-18 THD SIZE XK63-2 (66289)			EA	1	20 30
0 00430	5310-010-3319	WASHER, LOCK: GAGE CLAMP			EA	2 * * * *	20 14
X2 0 00431		WASHER, LOCK: GAGE MTG J03 (25567)			EA	6	20 2
00432		GROUP 55 - PUMPS					
00433		5500 - PUMP ASSEMBLY					
X2 0 00434		ADAPTER: DUST CAP MS270-22-11 (96906)			EA	2	21 9
X2 0 00435	5340-823-5318	CAP, DUST MS27028-11 (96906)			EA	2	21 7
X2 0 00436	4820-720-2487	COCK, DRAIN MSS4820-1 (08288)			EA	1	21 12
X2 0 00437	5340-767-8265	COVER, PLATE, ACCESS 4635 (25567)			EA	1	21 11
X2 0 00438		ELBOW, PIPE: SHEET, 1/4 IN. AGS02 (25567)	A		EA	1	
P 0 00439	5330-096-8177	GASKET: COVER PLATE 4635G (25567)			EA	1 * 2 2 3	21 10
P 0 00440	5330-612-2414	GASKET: DUST CAP H6388M (81718)			EA	2 * 2 4 7	21 8
N 0 00441	5310-012-0377	NUT, PLAIN, HEXAGON: COVER MTG			EA	12 * * * *	21 4
0 00442	5307-261-2636	STUD, PLAIN: PUMP HOUSING			EA	5 * * * *	21 1
0 00443	5307-360-0720	STUD, PLAIN: PUMP HOUSING			EA	15 * * * *	21 6
P A 00444	5307-268-5752	STUD, PLAIN: PUMP HOUSING C0607 (25567) MS51864-104-14 (96906)	A		EA	7	21 1
0 00445	5310-637-9541	WASHER, LOCK: COVER MTG			EA	12 * * * *	21 5

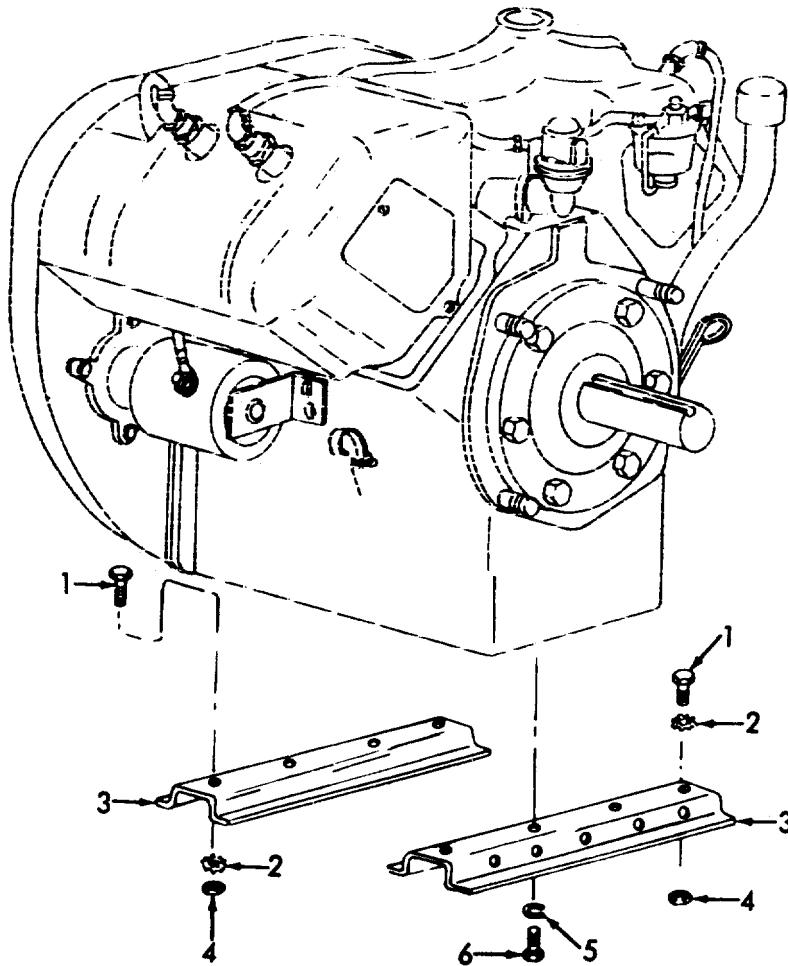
(1) SMR CODE INDEX NO.	(2) FEDERAL STOCK NUMBER	(3) DESCRIPTION REFERENCE NO. & MFR. CODE	(4) USABLE ON CODE UNIT OF ISSUE	(5) QTY INC IN UNIT PACK	(6) QTY INC IN UNIT	(7) 15-DAY ORGANIZATIONAL MAINTENANCE ALW (A) (B) (C) (D) 1-5 6-20 21-50 51-100	(8) ILLUS- TRATION (A) (B) FIG ITEM NO. NO.			
00446		5505 - SUCTION AND/OR DISCHARGE ASSEMBLY								
0 00447 0 00448 X2 0 R 00449	5306-225-9081 5306-616-2955 4320-656-7455	BOLT, MACHINE: ELIMINATOR MTG ELIMINATOR MTG ELIMINATOR ASSEMBLY S635 (25567)	EA EA EA	7 1 1	* * 1	* * 1	* * 1	22 22 22	8 9 7	
P 0 00450	3110-198-1050	BALL: 3/8 IN. DIA MSS3110-12 (08288)	EA	1	*	2	2	2	22	25
X2 0 00451 X2 0 00452	4730-555-3854 4930-098-5160	CLAMP, HOSE CLIP, VALVE LEVER A1917 (03933)	EA EA	1 1					22 22	23 31
P 0 00453	4820-287-4268	COCK, DRAIN: ELIMINATOR COVER S964 (25567)	EA	1	*	2	2	2	22	21
X2 0 00454 X2 0 00455	4730-187-7595 3655-304-7479	COUPLING, PIPE: DRAIN COCK DISK, NEEDLE, VALVE A2628 (03933)	EA EA	1 1					22 22	20 29
X2 0 00456	4320-656-7455	ELIMINATOR, AIR B1092B (03933)	EA	1					22	19
P 0 00457	3990-563-8051	FLOAT, AIR VALVE A2998 (03933)	EA	1	*	*	*	*	22	33
P 0 00458	4720-732-7554	HOSE, RUBBER: ELIMINATOR VALVE 2-282 (61463)	EA	1	*	2	2	2	22	22
X2 0 00459		LEVER: VALVE A3467 (03933)	EA	1					22	26
X2 0 00460		NIPPLE, CLOSE: DRAIN COCK, 1/4-18 THD SIZE, 3/4 IN. LG T04 (25567)	EA	1					22	24
0 00461 X2 0 00462	5315-839-5820	PIN, COTTER PIN, PIVOT A3233 (03933)	EA EA	1 1	*	*	*	*	22 22	28 18

(1) SMR CODE INDEX NO.	(2) FEDERAL STOCK NUMBER	(3) DESCRIPTION REFERENCE NO. & MFR. CODE	(4) USABLE ON CODE UNIT OF ISSUE	(5) QTY INC IN UNIT PACK	(6) QTY INC IN UNIT	(7) 15-DAY ORGANIZATIONAL MAINTENANCE ALW (A) (B) (C) (D) 1-5 6-20 21-50 51-100	(8) ILLUS- TRATION (A) (B) FIG ITEM NO. NO.
X2 0 00463		SEAT: VALVE A3468 (03933)	EA		1		22 27
X2 0 00464	5305-647-1948	SCREW, VALVE CLIP A393 (03933)	EA		1		22 30
X2 0 00467	4930-098-5166	SPACER, SLEEVE: VALVE A2629 (03933)	EA		1		22 32
P 0 00466	5330-542-1090	GASKET: ELIMINATOR MTG 5190G (25567)	EA		1	* 2 2 3	22 6
0 00467	5310-012-0376	NUT, PLAIN, HEXAGON: ELIMINATOR MTG	EA		8	* * * *	22 47
0 00468	5310-012-0214	WASHER, LOCK: ELIMINATOR MTG	EA		8	* * * *	22 48
00469		5510 - INLET AND OUTLET COMPONENTS					
X2 0 00470		ADAPTER: QUICK-DISCONNECT S1254 (25567)	B EA		2		23 11
X2 0 00471		ADAPTER: QUICK-DISCONNECT S1254A (25567)	A EA		2		23 11
X2 0 00472		BODY, STRAINER: SUCTION C252A (25567)	EA		1		22 34
X2 0 00473		CAP, DUST: QUICK-DISCONNECT S797 (25567)	B EA		2		23 13
X2 0 00474		CAP, DUST: QUICK-DISCONNECT S798A (25567)	A EA		2		23 13
X2 0 00475		COUPLER: QUICK-DISCONNECT MS270-27-17 (96906)	A EA		2		22 40
X2 0 00476		COUPLER: QUICK-DISCONNECT S1253 (25567)	B EA		2		22 40
X2 0 00477		ARM, CAM: QUICK-DISCONNECT B1850 (25567)	EA		4		22 39
X2 0 00478	4730-729-5529	ELBOW, PIPE: DISCHARGE 7085 (25567)	EA		1		23 5

(1) SMR CODE INDEX NO.	(2) FEDERAL STOCK NUMBER	(3) DESCRIPTION REFERENCE NO. & MFR. CODE	(4) USABLE ON CODE UNIT OF ISSUE	(5) QTY INC IN UNIT PACK	(6) QTY INC IN UNIT	(7) 15-DAY MAINTENANCE IN (A) UNIT	(8) ORGANIZATIONAL ALW (B) (C) (D)	(9) ILLUS- TRATION (A) (B) FIG ITEM NO. NO.
X2 0 00479 P 0	4730-714-6527	ELBOW, DISCHARGE 5453 (25567)	EA		1			21 3
00480	5330-899-4509	GASKET: DUST PLUG MS27030-9 (96906)	EA		5	2 4 9 17		22 41
P 0 00481	5330-542-1091	GASKET: ELBOW 5372G (25567)	EA		1	SEE GRP 9901		21 2
P 0 00482	5330-542-1091	GASKET: INLET VALVE, MANIFOLD, STRAINER BODY 5372G (25567)	EA		6	SEE GRP 9901		22 35
P 0 00483	5330-542-1091	GASKET: OUTLET, MANIFOLD, CHECK VALVE 5372G (25567)	EA		6	SEE GRP 9901		23 4
P 0 00484	5330-542-1092	GASKET: VALVE SEAT 5371G (25567)	EA		1	* 2 2 3		23 3
0 00485	5310-732-0558	NUT, PLAIN, HEXAGON: STRAINER BODY TO PUMP, SUCTION MANIFOLD TO STRAINER BODY, GATE VALVE TO SUCTION MANIFOLD, FLANGE COUPLER TO GATE VALVE, COVER PLATE, LIFTING BAIL TO SUPPORT	EA		60	* * * *		22 5
0 00486	5310-732-0558	NUT, PLAIN, HEXAGON: VALVE AND ELBOW MTG	EA		48	* * * *		23 1
X2 0 00487	4730-640-6188	PLUG, DUST MS270-29-17 (96906)	EA		2			22 42
X2 0 00488		CHAIN: DUST PLUG H1436 (81718)	EA		2			22 44
X2 0 00489	5340-656-7464	RING S1537 (25567)	EA		4	SEE GRP 9901		22 43
X2 0 00490	4730-042-8988	PLUG, PIPE: MANIFOLD P04 (25567)	EA		1			23 9
0 00491	5305-269-3213	SCREW, CAP, HEXAGON HEAD: ELBOW AND MANIFOLD MTG	EA		28	* * * *		23 7
0 00492	5305-543-4497	SCREW, CAP, HEXAGON HEAD: QUICK-DISCONNECT AND SUPPORT MTG	EA		2	* * * *		23 12
0 00493	5305-543-4497	SCREW, CAP, HEXAGON HEAD: QUICK-DISCONNECT TO GATE VALVE	EA		2	* * * *		22 45
0 00494	5305-269-3214	SCREW, CAP, HEXAGON HEAD: QUICK-DISCONNECT TO GATE VALVE	EA		22	* * * *		22 36
0 00495	5305-269-3211	SCREW, CAP, HEXAGON HEAD: SUPPORT MTG	EA		4	* * * *		19 12

(1) SMR CODE INDEX NO.	(2) FEDERAL STOCK NUMBER	(3) DESCRIPTION REFERENCE NO. & MFR. CODE	(4) USABLE ON CODE UNIT OF ISSUE	(5) QTY INC IN UNIT PACK	(6) QTY INC IN UNIT	(7) 15-DAY MAINTENANCE ORGANIZATIONAL ALW (A) (B) (C) (D)	(8) ILLUS- TRATION (A) (B) FIG ITEM NO. NO.
X2 0R 00496		STRAINER ASSEMBLY S795A (25567)	EA		1		
X2 0 00497		CLAMP, COVER H366M1 (81718)	EA		1		22 13
X2 0 00498		COVER, SCREEN H477A (81718)	EA		1		22 14
P 0 00499	4930-732-7749	GASKET: COVER H508M (81718)	EA		1	2 2 4 8	22 15
P 0 00500	4930-732-7750	GASKET: SCREEN H778M (81718)	EA		2	2 2 4 8	22 16
0 00501	5310-064-8521	NUT, SELF-LOCKING, HEXAGON: SETSCREW	EA		1	* * * *	22 12
X2 0 00502		SCREEN, WASH C255 (81718)	EA		1		22 17
0 00503	5305-011-0120	SETSCREW: COVER MTG	EA		1	* * * *	22 11
PA 00504	5307-268-5751	STUD, PLAIN: CHECK VALVE MTG MS51864-104-12 (96906)	EA		2	* * * *	
PA 0 00505	5307-268-5752	STUD, PLAIN: CHECK VALVE MTG MS51864-104-14 (96906)	EA		8	* * * *	
PA 0 00506	5307-268-5751	STUD, PLAIN: DISCHARGE FITTING MS51864-104-12 (96906)	EA		16	* * * *	22 46
PA 0 00507	5307-268-5751	STUD, PLAIN: VALVE TO MANIFOLD MS51864-104-12 (96906)	EA		16	* * * *	23 10
X2 0 00508		SUPPORT: DISCHARGE VALVE 6836A (25567)	EA		2		19 13
X2 0 00509		SUPPORT: SUCTION VALVE, LH 9734B (25567)	EA		1		19 15
X2 0 00510		SUPPORT: SUCTION VALVE, RH 97334A (25567)	EA		1		19 14
X2 0 00511	3990-563-8018	VALVE ASSEMBLY, CHECK 5361 (25567)	EA		1		23 2
X2 0 00512		VALVE ASSEMBLY, GATE S793A (81718)	EA		4		22 38

(1) SMR CODE INDEX NO.	(2) FEDERAL STOCK NUMBER	(3) DESCRIPTION REFERENCE NO. & MFR. CODE	(4) USABLE ON CODE UNIT OF ISSUE	(5) QTY INC IN UNIT PACK	(6) QTY INC IN UNIT	(7) 15-DAY MAINTENANCE UNIT 1-5 6-20 21-50 51-100	ORGANIZATIONAL ALW (C) (D)	(8) ILLUS- TRATION (A) (B) FIG ITEM NO. NO.
0 00513 0 00514	5310-639-1497	WASHER, FLAT: SUPPORT MTG	EA		8	* * * *		19 11
0 00514	5310-637-9541	WASHER, LOCK: STRAINER BODY TO PUMP, SUCTION MANIFOLD TO STRAINER BODY, GATE VALVE TO SUCTION MANIFOLD, FLANGE COUPLER TO GATE VALVE, COVER PLATE, LIFTING BAIL TO SUPPORT	EA		60	* * * *		22 4
0 00515 00516	5310-261-7340	WASHER, LOCK: VALVE AND ELBOW MTG J06 (24467) 5518 - MANIFOLD ASSEMBLY	EA		48			23 6
X2 0 00517	4730-711-6699	MANIFOLD, DISCHARGE 8514 (25567)	EA		1			23 8
X2 0 00518		MANIFOLD, SUCTION 9546 (25567)	EA		1			22 37
00519		GROUP 99 - PARTS PECULIAR						
00520		9901 - MULTI-LISTED PARTS						
X2 0 00521		CHAIN, SAFETY 11706 (25567)	EA		9			
P 0 00522	5330-255-1298	GASKET	EA		2	* * 2 2		
P 0 00523	5330-542-1091	GASKET	EA		13	3 11 21 42		
X2 0 00524	5340-656-7464	RING	EA		16			

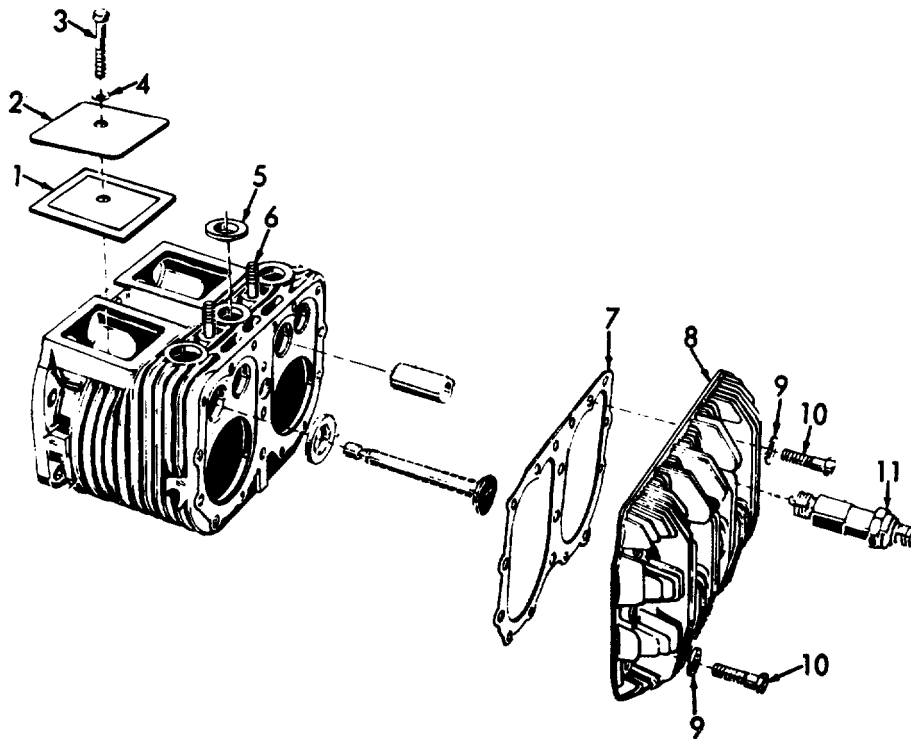


ME 4320-218-20P/1

Figure 1. Engine Mounting Brackets.

INDEX TO PARTS, FIGURE 1

Reference Number	Functional Group	Item Name
1	0100	SCREW
2	0100	WASHER
3	0100	SUPPORT
4	0100	NUT
5	0100	WASHER
6	0100	SCREW

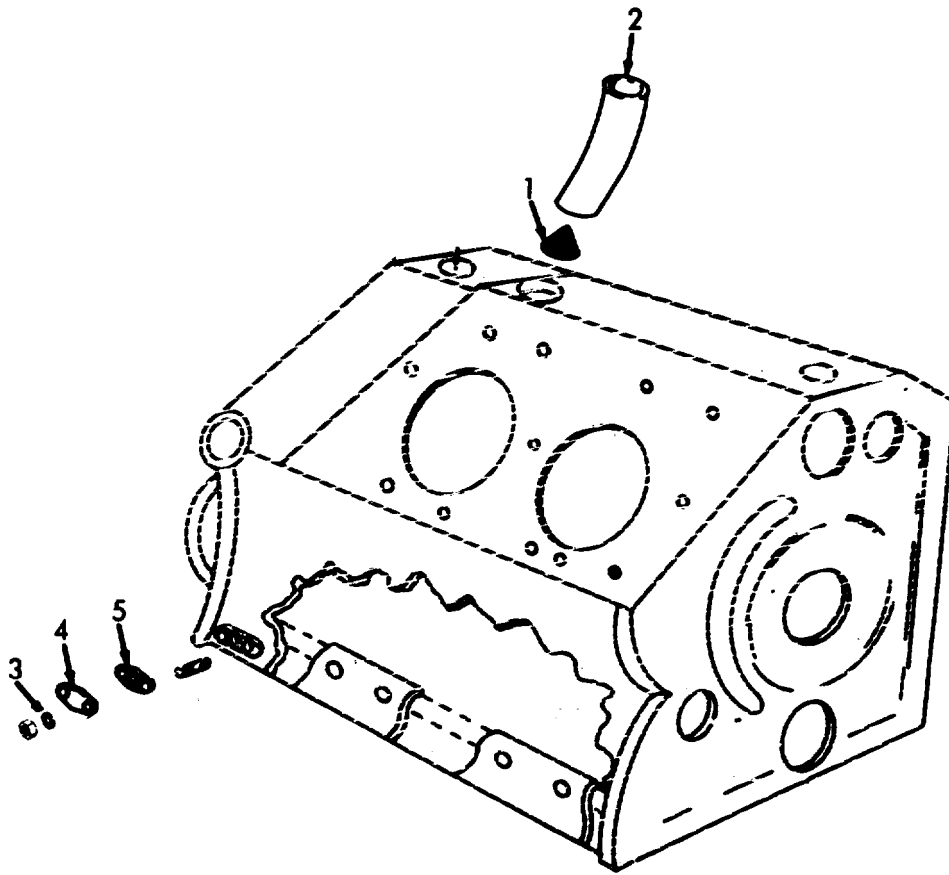


ME 4320-218-20P/2.

Figure 2. Cylinder Block.

INDEX TO PARTS, **FIGURE 2**

Reference Number	Functional Group	Item Name
1	0105	GASKET
2	0105	PLATE
3	0105	SCREW
4	0105	WASHER
5	0108	RETAINER
6	0101	STUD
7	0101	GASKET
8	0101	CYLINDER HEAD
9	0101	WASHER
10	0101	SCREW
11	0605	SPARK PLUG



ME 4320-218-20P/3

Figure 3. Crankcase.

INDEX TO PARTS, FIGURE 3

Reference Number	Functional Group	Item Name
1	0106	STRAINER
2	0106	TUBE
3	0101	WASHER
4	0101	PLATE
5	0101	GASKET

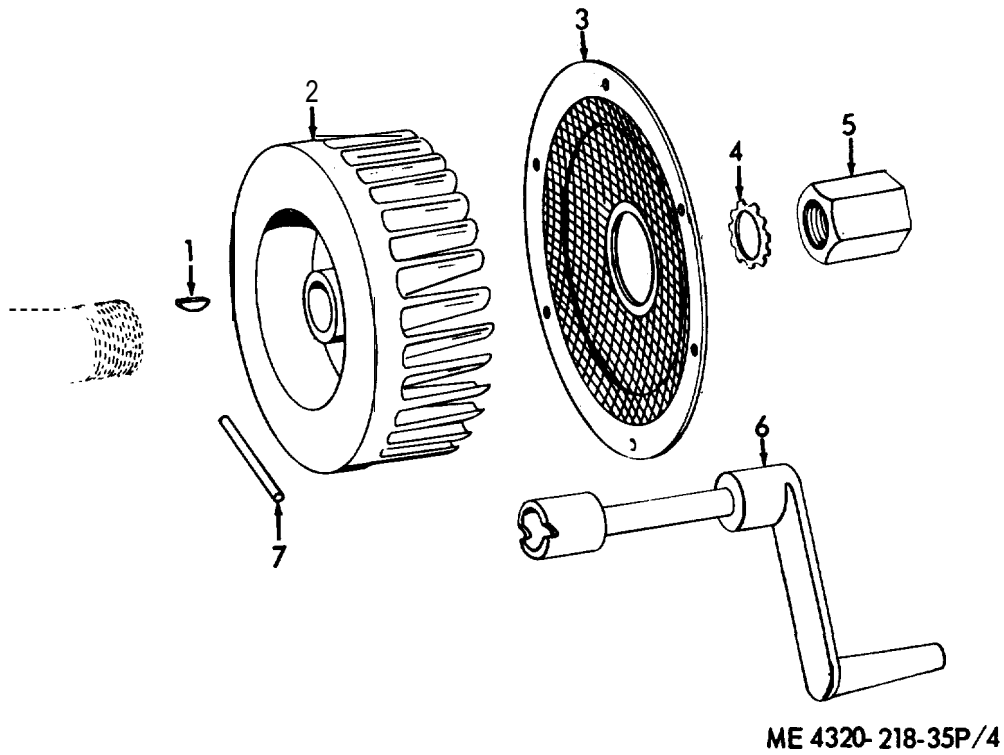
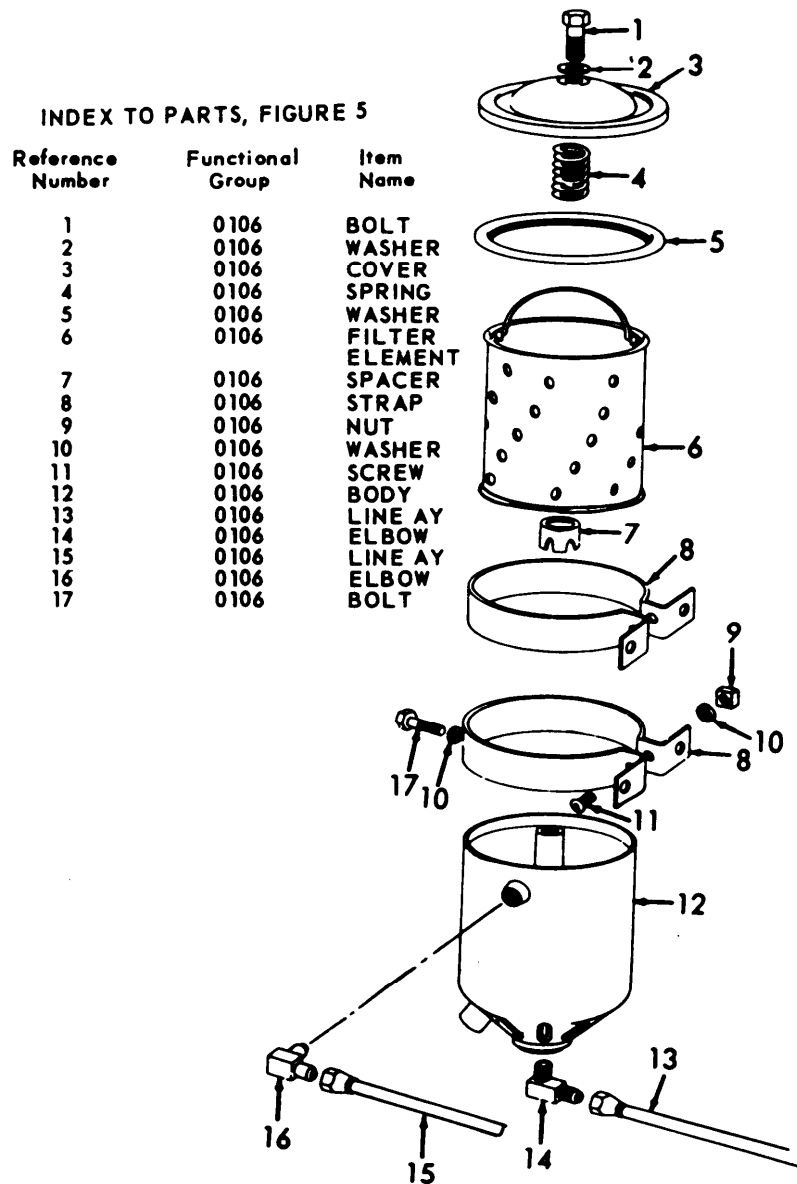


Figure 4. Flywheel.

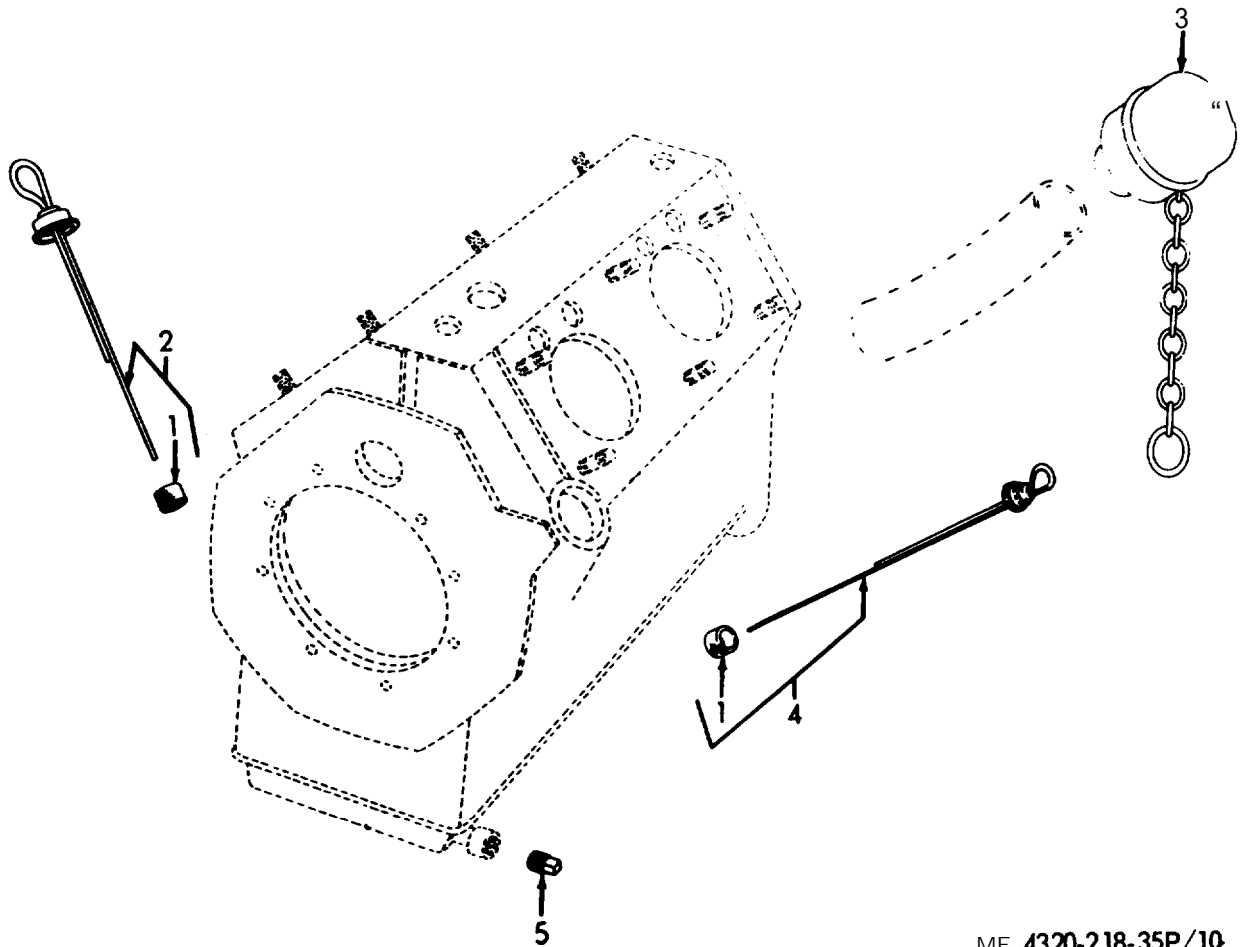
INDEX TO PARTS, FIGURE 4

Reference Number	Functional Group	Item Name
1	0102	KEY
2	0103	FLYWHEEL
3	0502	SCREEN
4	0103	WASHER
5	0103	NUT
6	0107	CRANK
7	0102	PIN



MSC 4320-218-25P/8

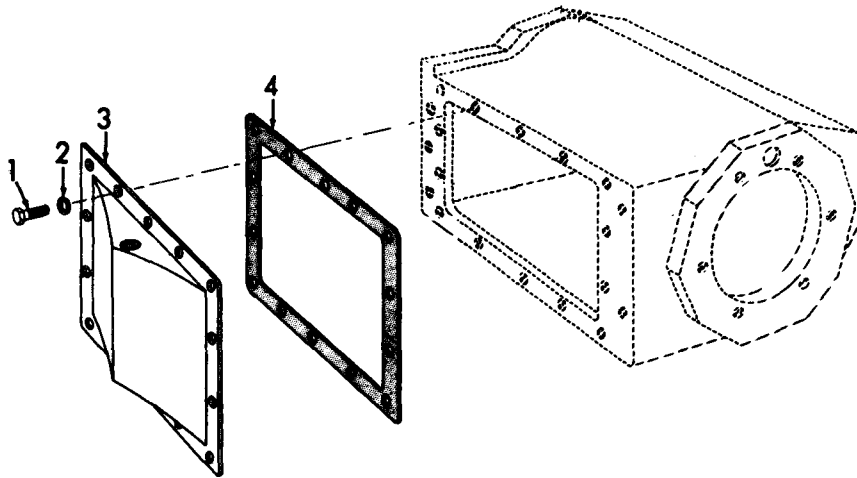
Figure 5. Oil Filter.



ME 4320-218-35P/10

Figure 6. **Gage, Rod and Breather.**
 INDEX TO **PARTS, FIGURE 6**

Reference Number	Functional Group	Item Name
1	0106	GASKET
2	0106	GAGE-ROD-CAP
3	0106	BREATHER
4	0106	SABER
5	0106	PLUG



ME 4320-218-20P/7

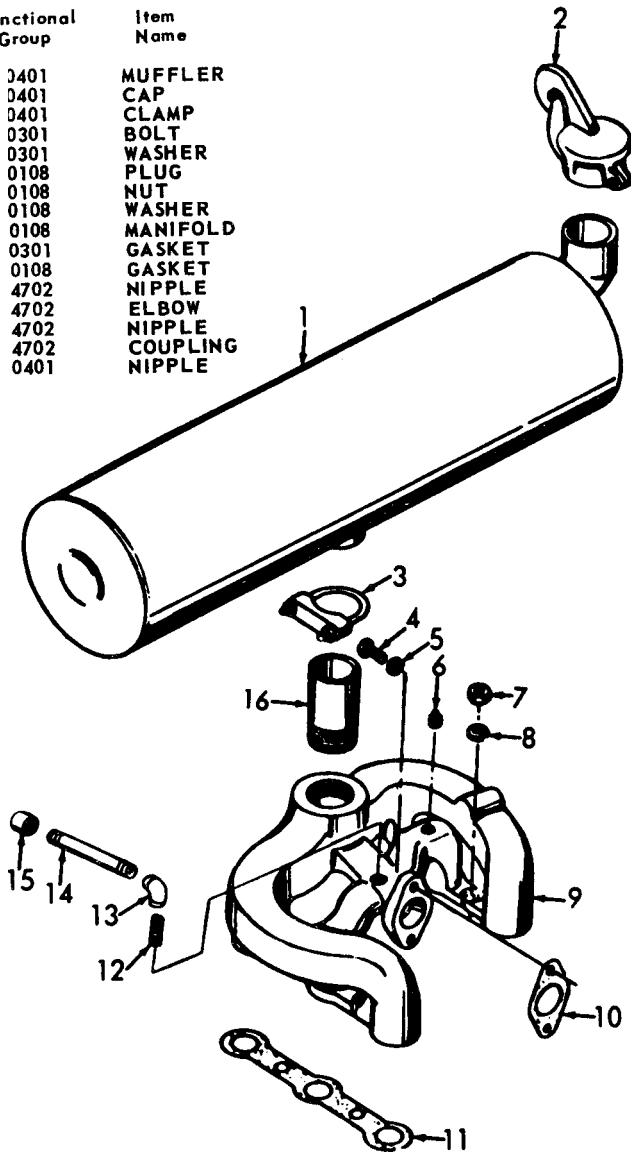
Figure 7. Oil Pan.

INDEX TO PARTS, FIGURE 7

Reference Number	Functional Group	Item Name
1	0106	BOLT
2	0106	WASHER
3	0106	PAN
4	0106	GASKET

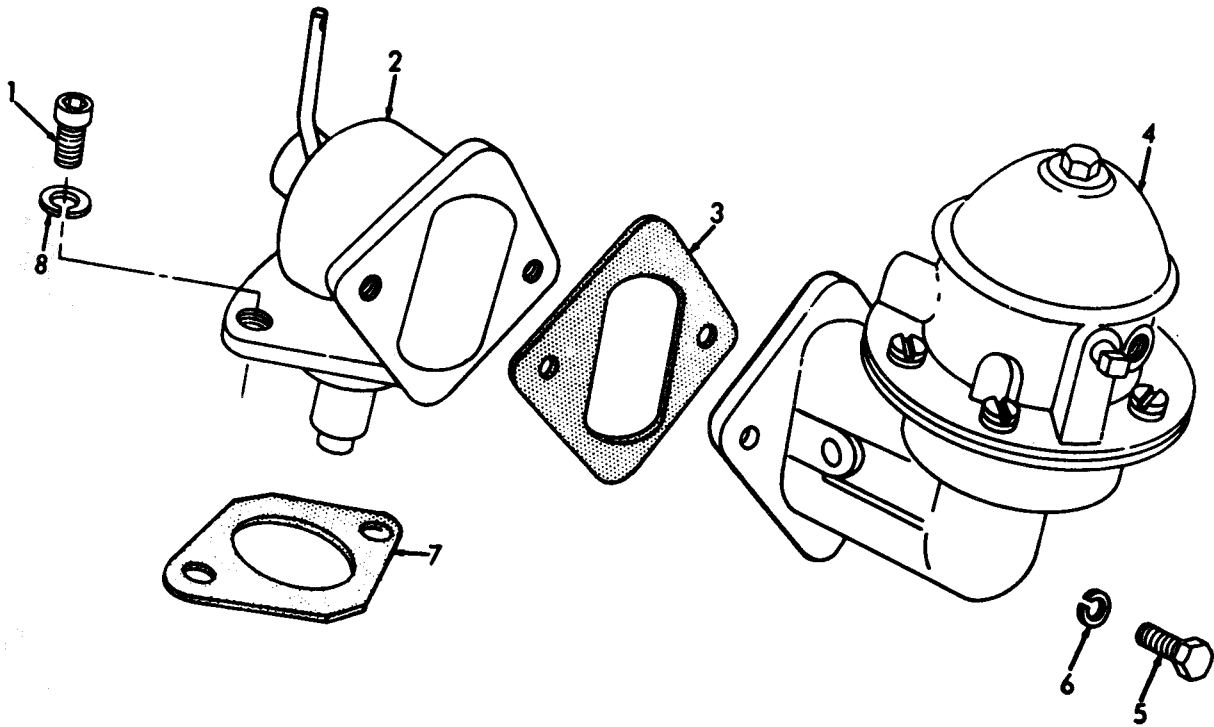
INDEX TO PARTS, FIGURE 8

Reference Number	Functional Group	Item Name
1	0401	MUFFLER
2	0401	CAP
3	0401	CLAMP
4	0301	BOLT
5	0301	WASHER
6	0108	PLUG
7	0108	NUT
8	0108	WASHER
9	0108	MANIFOLD
10	0301	GASKET
11	0108	GASKET
12	4702	NIPPLE
13	4702	ELBOW
14	4702	NIPPLE
15	4702	COUPLING
16	0401	NIPPLE



ME 4320-218-35P/12

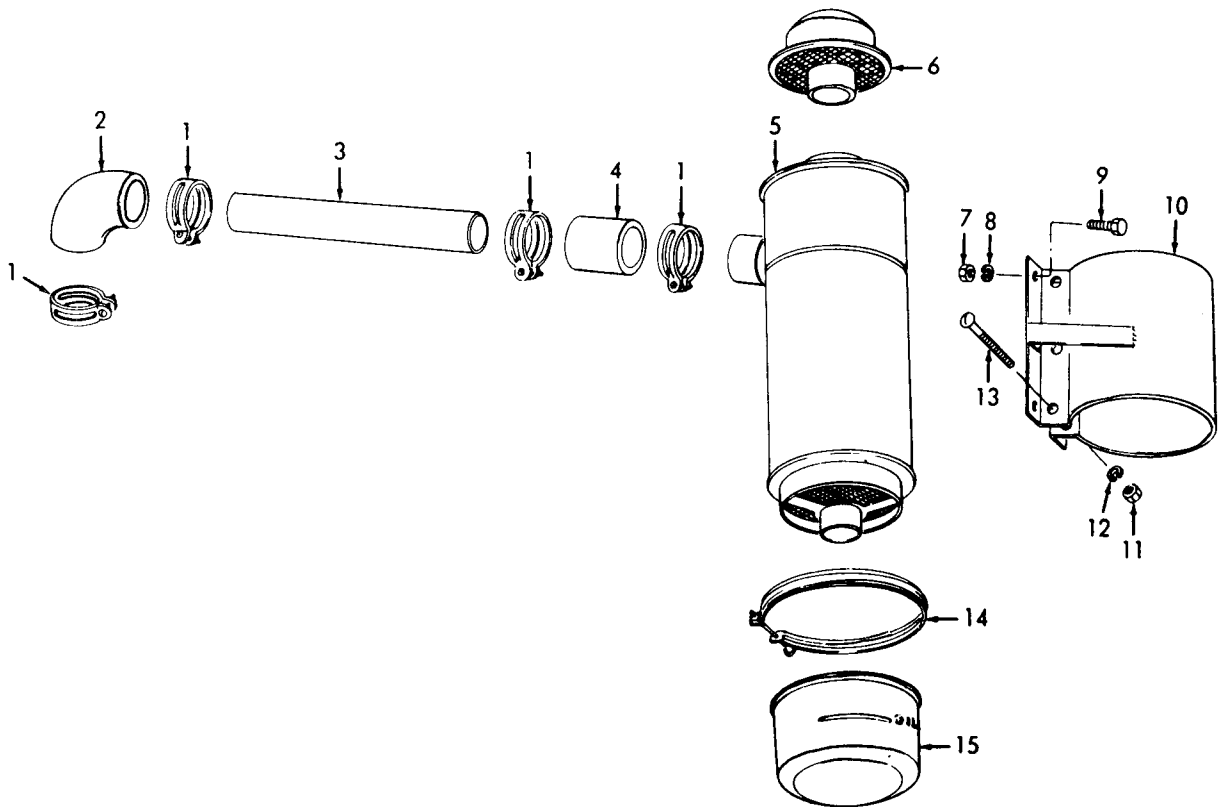
Figure 8. Manifold and Muffler.



ME 4320-218-35P/13

Figure 9. Fuel Pump.
INDEX TO PARTS, FIGURE 9

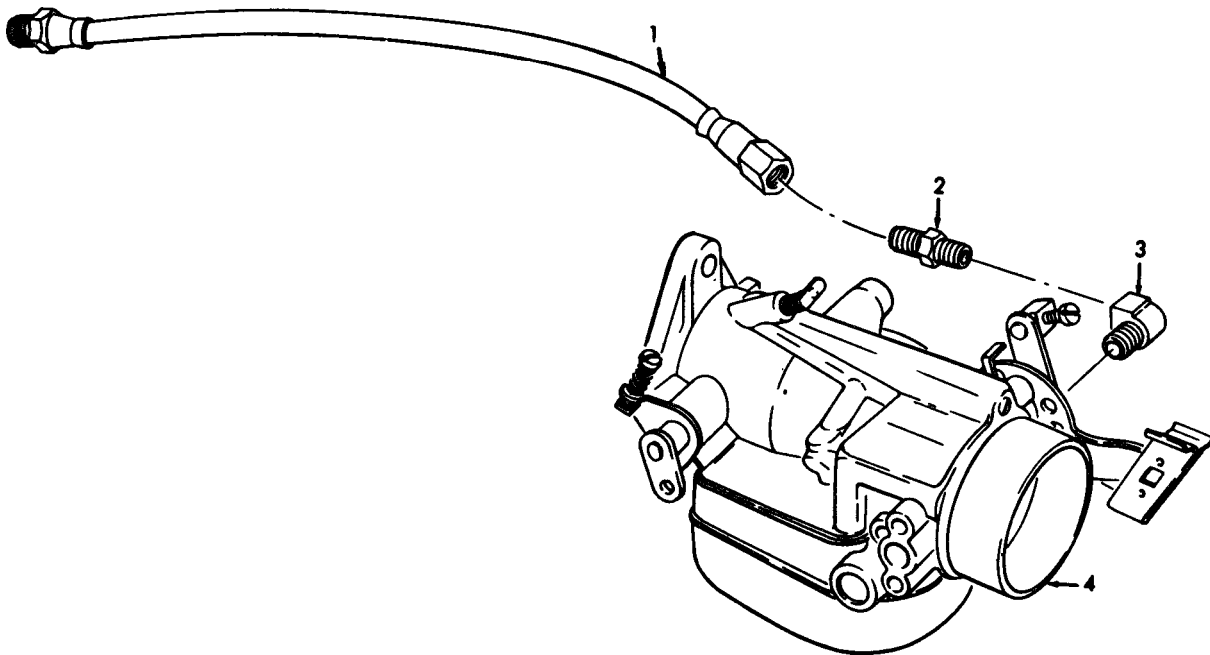
Reference Number	Functional Group	Item Name
1	0311	SCREW
2	0311	FUEL PUMP ADAPT
3	0302	GASKET
4	0302	PUMP
5	0302	BOLT
6	0302	WASHER
7	0311	GASKET
8	0311	WASHER



ME 4320-218-35P/14

Figure 10. Air Breather.
INDEX TO PARTS, FIGURE 10

Reference Number	Functional Group	Item Name
1	0304	CLAMP
2	0304	HOSE
3	0304	TUBE
4	0304	HOSE
5	0304	BODY AY
6	0304	CAP
7	0304	NUT
8	0304	WASHER
9	0304	BOLT
10	0304	STRAP
11	0304	NUT
12	0304	WASHER
13	0304	SCREW
14	0304	CLAMP
15	0304	AIR CLEAN CUP AY

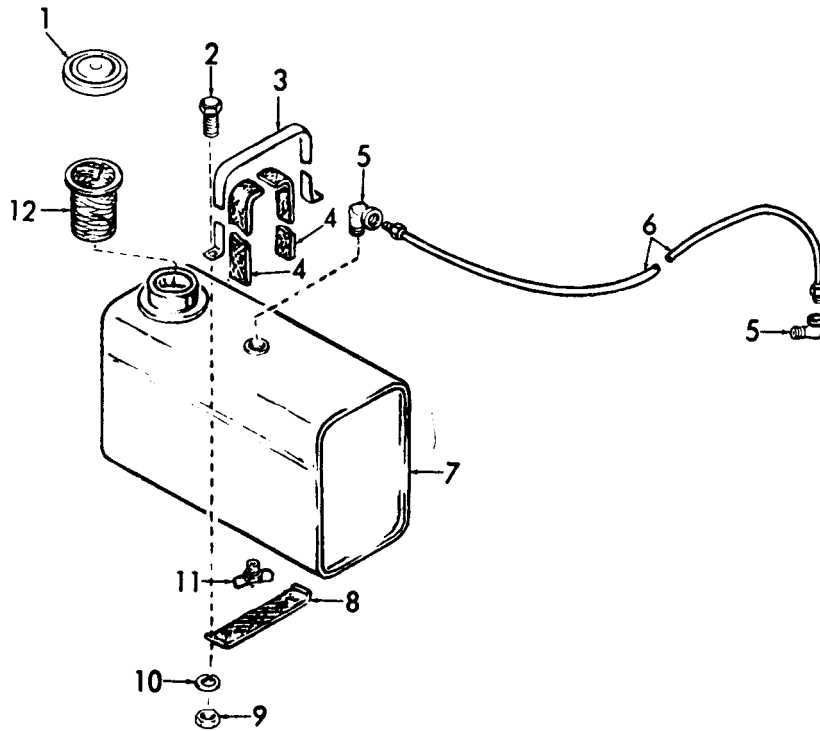


ME 4320-218-35P/15

Figure 11. Carburetor.

INDEX TO PARTS, FIGURE 11

Reference Number	Functional Group	Item Name
1	0306	LINE AY
2	0306	ADAPTER
3	0306	ELBOW
4	0301	CARBURETOR

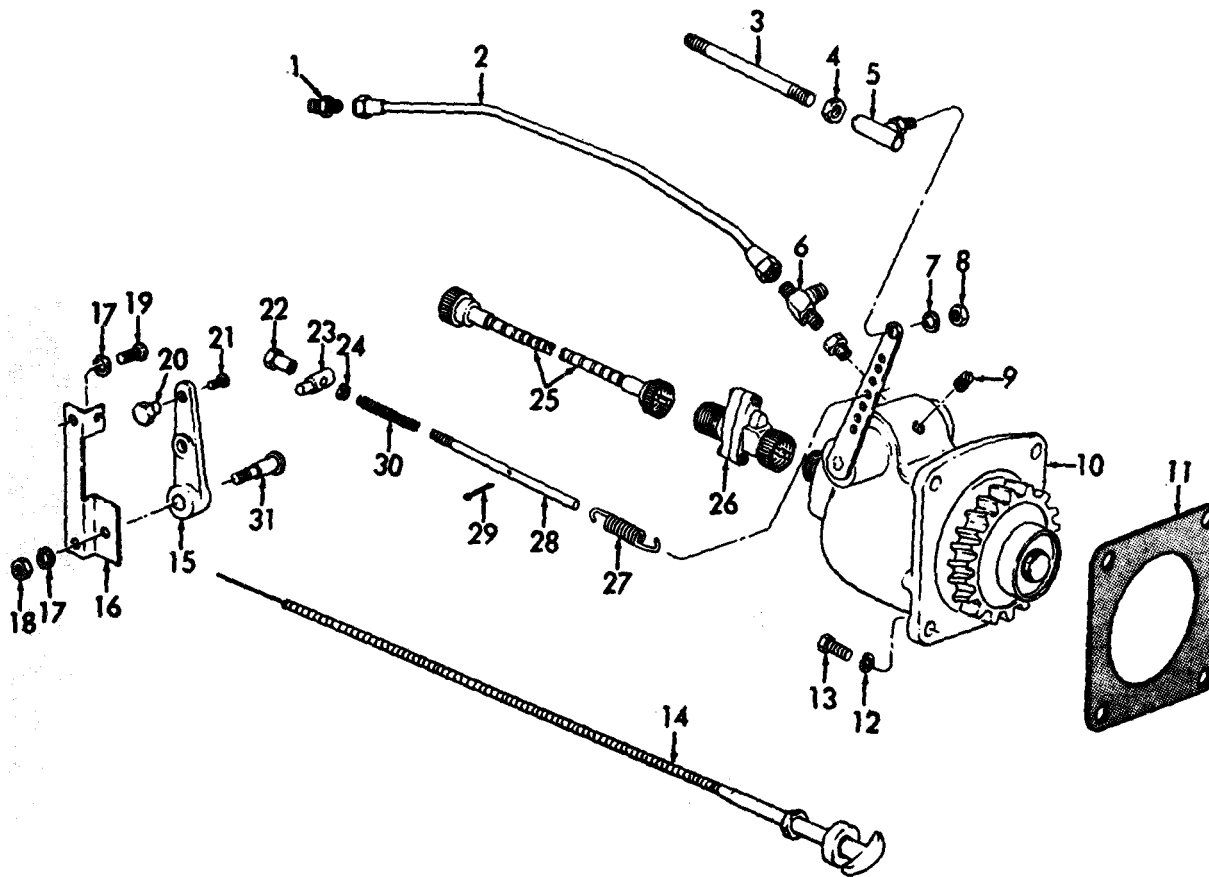


ME 4320-218-35P/16

Figure 12. Fuel Tank.

INDEX TO PARTS, FIGURE 12

Reference Number	Functional Group	Item Name
1	0306	CAP
2	0306	SCREW
3	0306	STRAP
4	0306	STRIP
5	0306	ELBOW
6	0306	TUBE AY
7	0306	TANK
8	0306	STRIP
9	0306	NUT
10	0306	WASHER
11	0306	COCK
12	0306	STRAINER

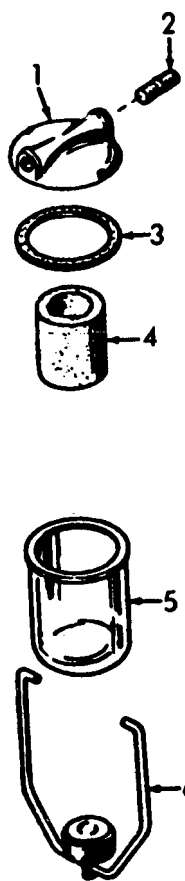


ME 4320-218-20P/13

Figure 13 Governor and Drive.

INDEX TO PARTS, FIGURE 13

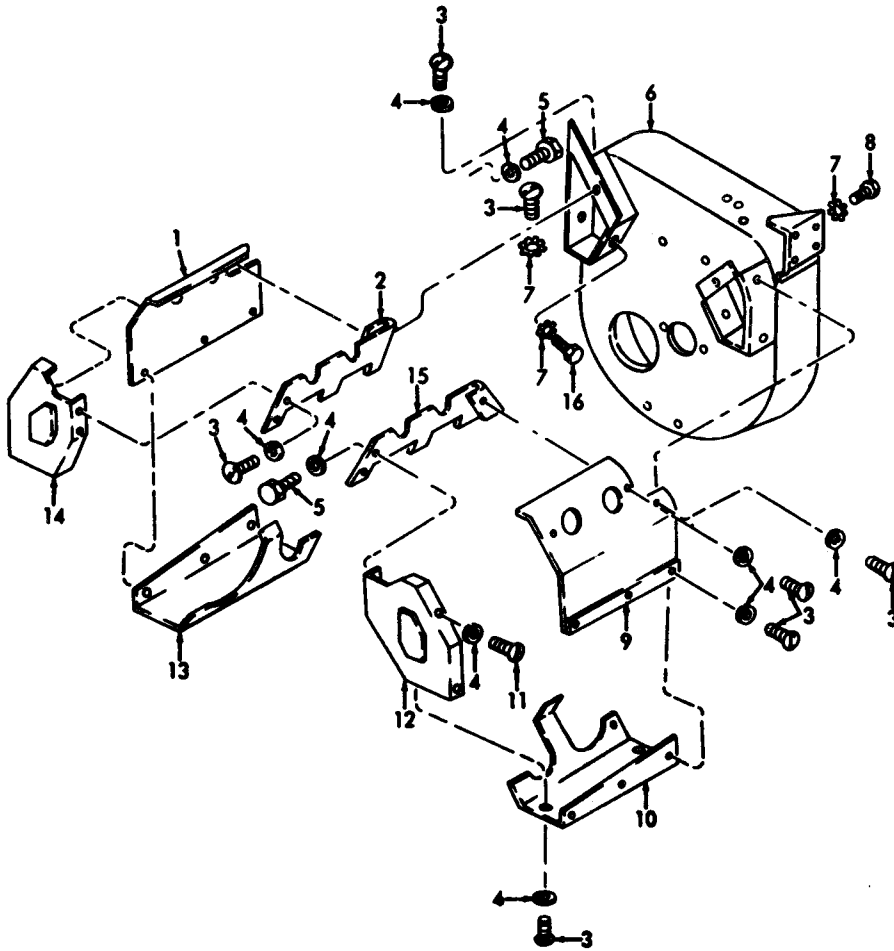
Reference Number	Functional Group	Item Name	Reference Number	Functional Group	Item Name
1	0106	ADAPTER	17	0308	WASHER
2	0106	LINE AY	18	0308	NUT
3	0308	ROD	19	0308	SCREW
4	0308	NUT	20	0308	SWIVEL
5	0308	BALL JOINT	21	0308	SCREW
6	0106	TEE	22	0308	NUT
7	0308	WASHER	23	0308	PIN
8	0308	NUT	24	0308	RETAINER
9	0308	PLUG	25	4701	SHAFT AY
10	0308	GOVERNOR AY	26	4701	ADAPTER
11	0308	GASKET	27	0308	SPRING
12	0308	WASHER	28	0308	PIN
13	0308	BOLT	29	0308	PIN
14	0312	CABLE	30	0308	SPRING
15	0308	LEVER	31	0308	PIN
16	0308	BRACKET			



ME 4320-218-35P/19

Figure 14. Fuel Filter.
INDEX TO PARTS, FIGURE 14

Reference Number	Functional Group	Item Name
1	0309	HEAD
2	0306	NIPPLE
3	0309	WASHER
4	0309	ELEMENT
5	0309	BOWL
6	0309	BAIL AY

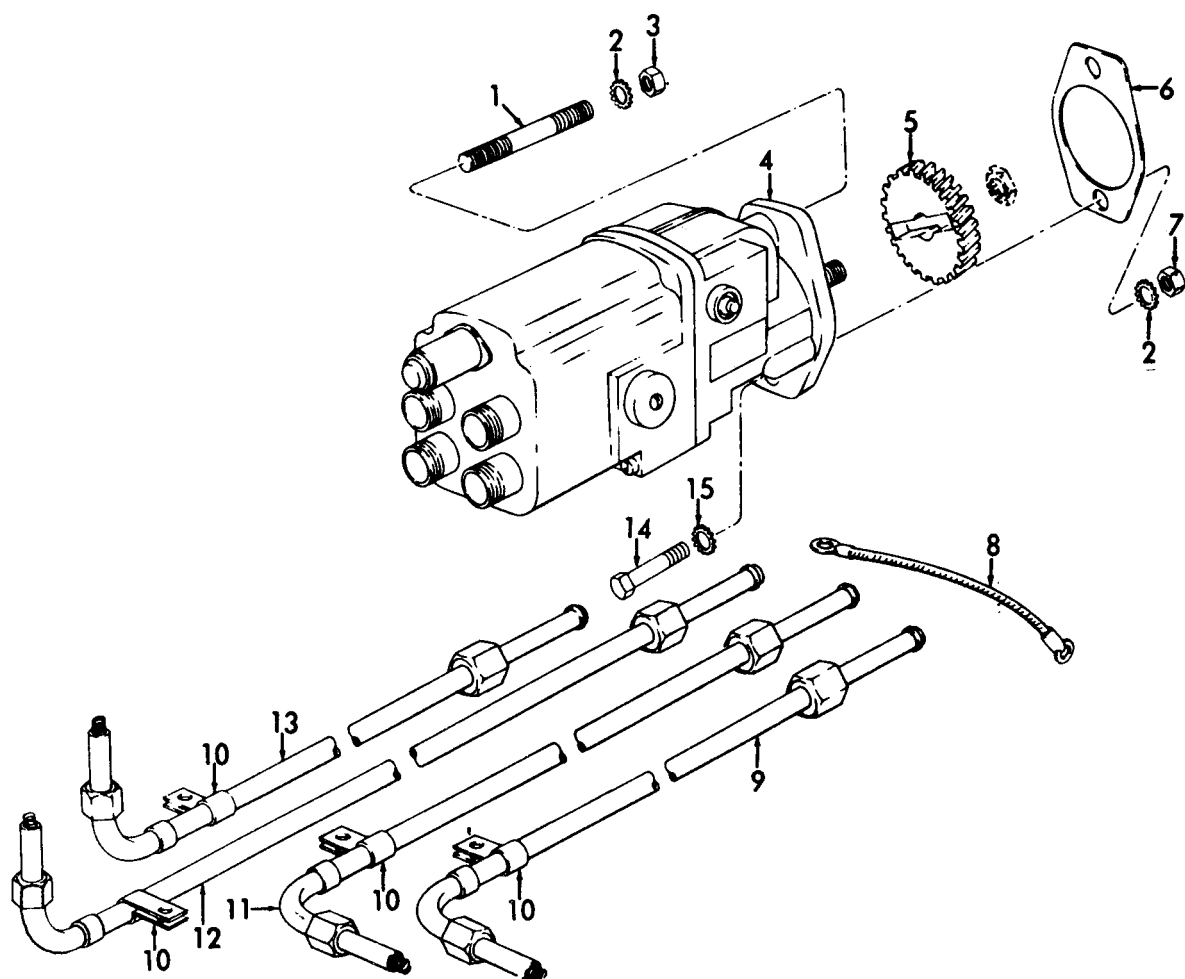


ME 4320-218-35P/20

Figure 15. Engine Shroud.

INDEX TO PARTS, FIGURE 15

Reference Number	Functional Group	Item Name
1	0502	SHROUD
2	0502	DEFLECTOR
3	0502	SCREW
4	0502	WASHER
5	0502	SCREW
6	0502	SHROUD
7	0502	WASHER
8	0502	BOLT
9	0502	COVER
10	0502	SHROUD
11	0502	SCREW
12	0502	SHROUD
13	0502	SHROUD
14	0502	COVER
15	0502	DEFLECTOR
16	0502	SCREW

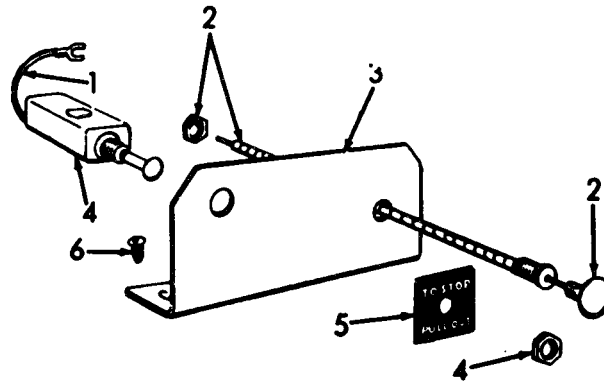


ME 4320-218-20P/16

Figure 16. Magneto.

INDEX TO PARTS, FIGURE 16

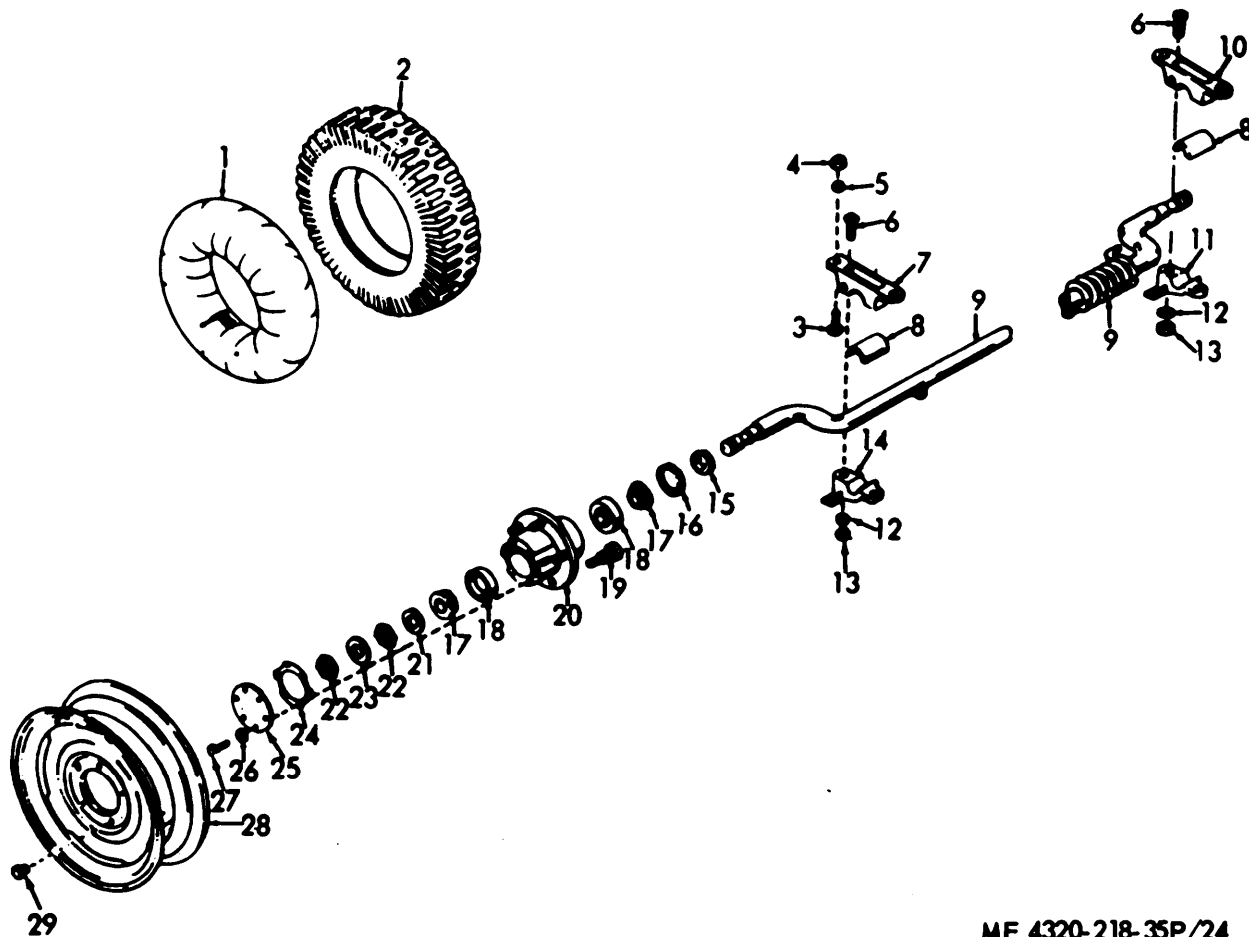
Reference Number	Functional Group	Item Name
1	0605	STUD
2	0605	WASHER
3	0605	NUT
4	0605	MAGNETO AY
5	0605	GEAR
6	0605	GASKET
7	0605	NUT
8	0605	LEAD
9	0605	CABLE
10	0615	CLAMP
11	0605	CABLE
12	0605	CABLE
13	0605	CABLE
14	0605	SCREW
15	0605	WASHER



ME 4320-218-35P/23

Figure 17. Control.
INDEX TO PARTS, FIGURE 17

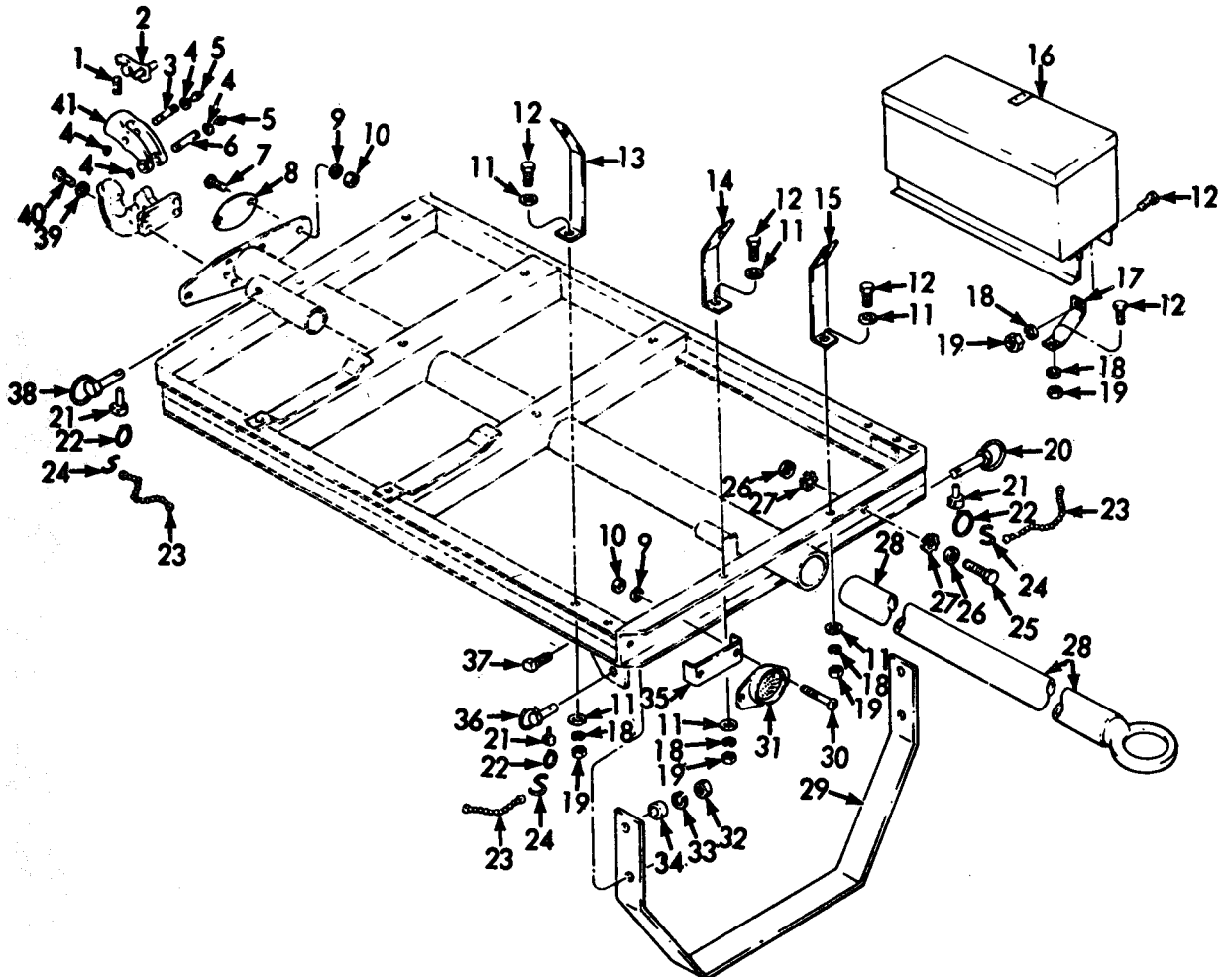
Reference Number	Functional Group	Item Name
1	0607	LEAD
2	0312	CONTROL ARM
3	0607	BRACKET
4	0607	SWITCH
5	2210	PLATE
6	0607	SCREW



ME 4320-218-35P/24

Figure 18. Axle.
INDEX TO PARTS, FIGURE 18

Reference Number	Functional Group	Item Name	Reference Number	Functional Group	Item Name
1	1313	INNER TUBE	16	1311	SEAL
2	1313	TIRE	17	1311	CONE AND ROLLERS
3	1100	BOLT	18	1311	CUP
4	1100	NUT	19	1311	BOLT
5	1100	WASHER	20	1311	HUB
6	1100	BOLT	21	1100	WASHER
7	1100	BRACKET	22	1100	NUT
8	1100	INSERT	23	1100	WASHER
9	1100	AXLE	24	1311	GASKET
10	1100	BRACKET	25	1311	COVER
11	1100	BRACKET	26	1311	WASHER
12	1100	WASHER	27	1311	SCREW
13	1100	NUT	28	1311	WHEEL
14	1100	BRACKET	29	1311	NUT
15	1100	COLLAR			

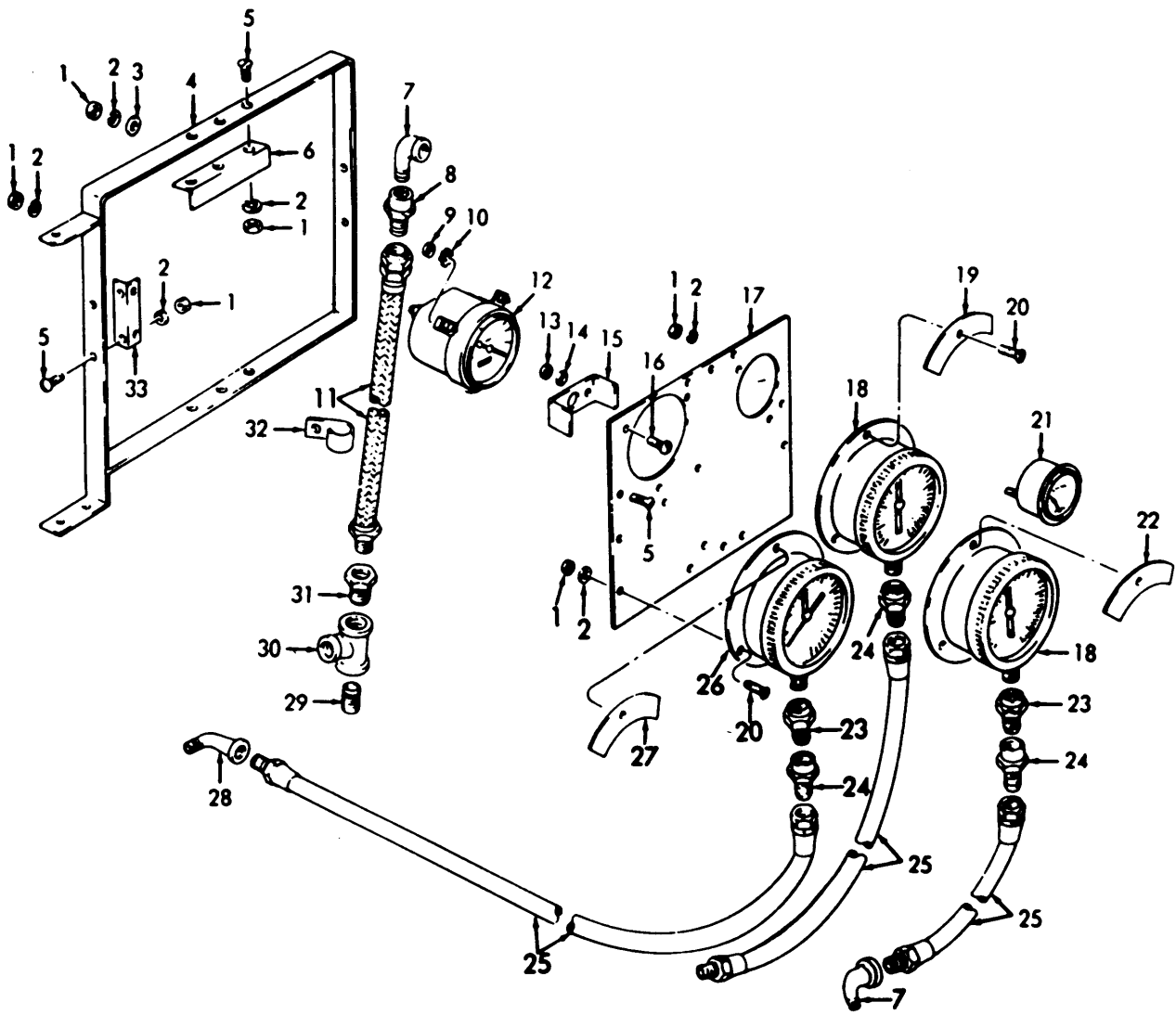


ME 4320-218-20P/19

Figure 19. Frame.

INDEX TO PARTS, FIGURE 19

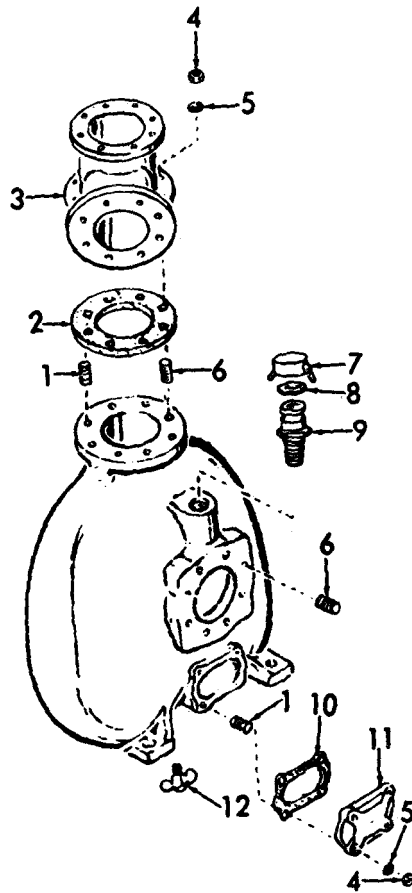
Reference Number	Functional Group	Item Name	Reference Number	Functional Group	Item Name
1	1503	SPRING	22	1503	RING
2	1503	LATCH	22	1507	RING
3	1503	PIN	22	1808	RING
4	1503	RING	23	1503	CHAIN
5	1503	FITTING	23	1507	CHAIN
6	1503	PIN	23	1808	CHAIN
7	2202	SCREW	24	1503	RING
8	2202	REFLECTOR	25	1501	BOLT
9	2202	WASHER	26	1501	NUT
10	2202	NUT	26	1501	WASHER
11	5510	WASHER	27	1501	WASHER
12	1808	SCREW	28	1503	TOUNGE
12	5510	SCREW	29	1507	STAND
13	5510	SUPPORT	30	2202	SCREW
14	5510	SUPPORT	31	2202	REFLECTOR
15	5510	SUPPORT	32	1507	NUT
16	1808	BOX AY	33	1507	WATER
17	1808	BRACKET	34	1507	BUSHING
18	1808	WASHER	35	2202	SPACER
19	1808	NUT	36	1507	SCREW
20	1503	PIN	37	1507	BOLT
21	1503	PIN	38	1808	PIN
21	1507	PIN	39	1503	WASHER
21	1808	PIN	40	1503	SCREW
				1503	LATCH



ME 4320-218-35P/26

Figure 20. Instrument Panel.
INDEX TO PARTS, FIGURE 20

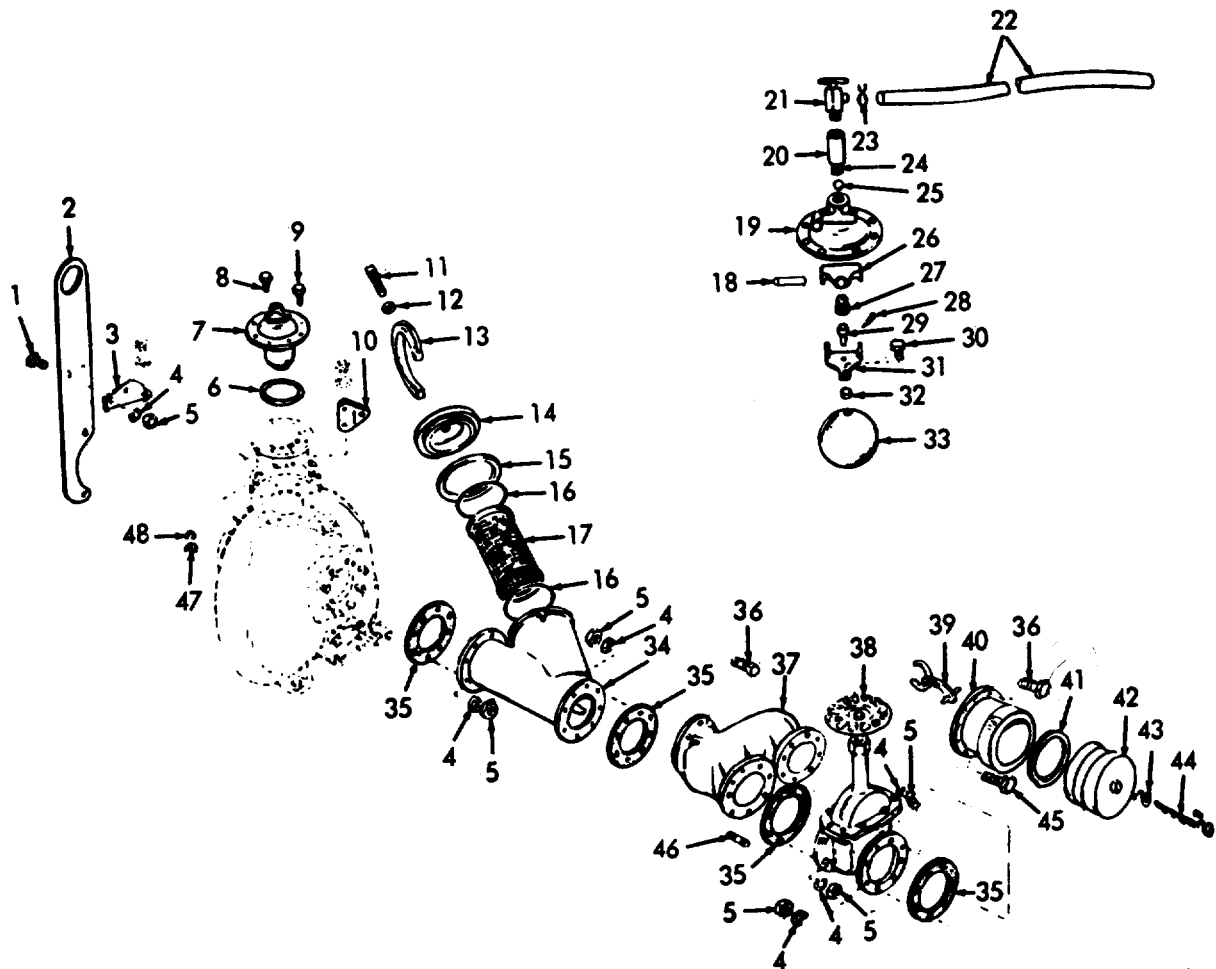
Reference Number	Functional Group	Item Name	Reference Number	Functional Group	Item Name
1	0607	NUT	17	0607	PANEL
1	4702	NUT	18	4702	GAGE
2	0607	WASHER	19	2210	PLATE
2	4702	WASHER	20	0607	SCREW
3	0607	WASHER	20	4702	SCREW
4	0607	BRACKET	21	4702	GAGE
5	0607	SCREW	22	2210	PLATE
6	0607	MOUNT	23	4702	SHUBBER
7	4702	ELBOW	24	4702	ADAPTER
8	4702	ADAPTER	25	4702	HOSE
9	4701	NUT	26	4702	GAGE
10	4701	WASHER	26	4702	GAGE
11	4702	HOSE AY	27	2210	PLATE
12	4701	TACHOMETER	28	4702	ELBOW
13	4702	NUT	29	4702	NIPPLE
14	4702	WASHER	30	4702	TEE
15	4702	PLATE	31	4702	BUSHING
16	4701	SCREW	32	4702	CLIP
			33	0607	MOUNT



ME 4320-218-20P/21
 Figure 21. Pump.

INDEX TO PARTS, FIGURE 21

Reference Number	Functional Group	Item Name
1	5501	STUD
2	5510	GASKET
3	5510	ELBOW
4	5500	NUT
5	5500	WASHER
6	5500	STUD
7	5500	CAP
8	5500	GASKET
9	5500	ADAPTER
10	5500	GASKET
11	5500	COVER PLATE
12	5500	COCK



ME 4320-218-35P/28

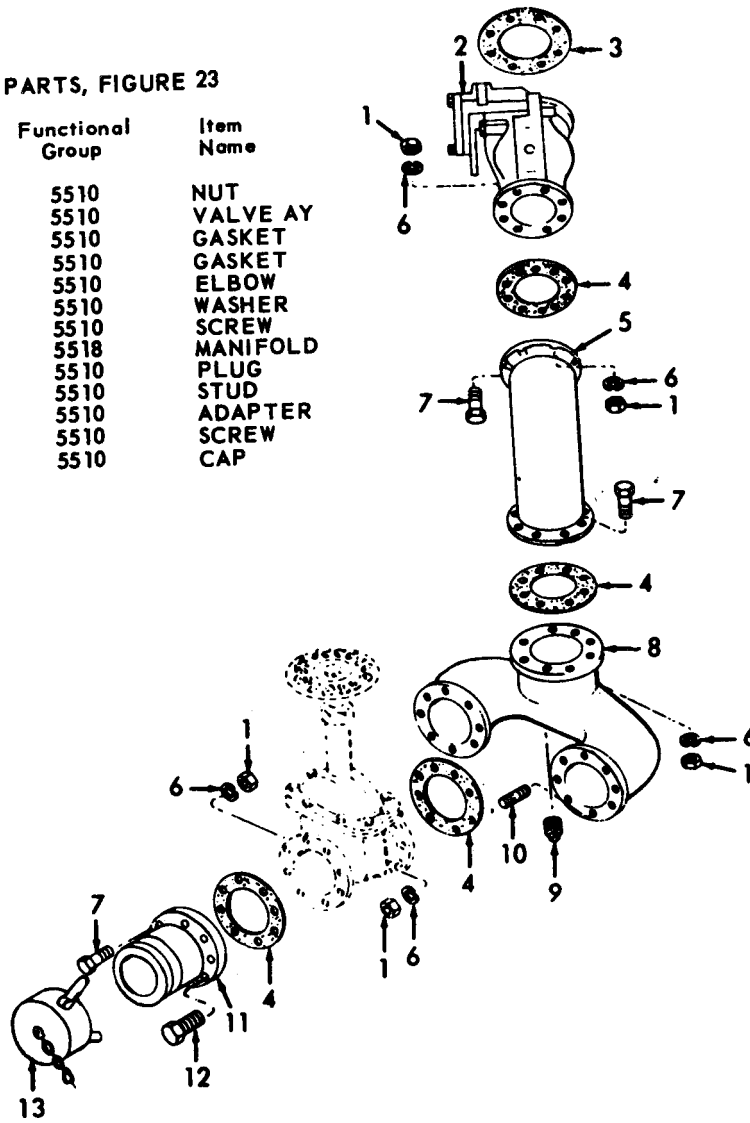
Figure 22. Strainer and Valve.

INDEX TO PARTS, FIGURE 22

Reference Number	Functional Group	Item Name	Reference Number	Functional Group	Item Name
1	1501	SCREW	25	5505	BALL LEVER
2	1501	BAIL	26	5505	LEVER
3	1501	SUPPORT	27	5505	SEAT
4	1501	WASHER	28	5505	PIN
5	1501	NUT	29	5505	DISK
6	5505	GASKET	30	5505	SCREW
7	5505	ELIMINATOR AY	31	5505	CLIP
8	5505	BOLT	32	5505	SPACER
9	5505	BOLT	33	5505	FLOAT
10	0312	BRACKET	34	5510	BODY
11	5510	SETSCREW	35	5510	GASKET
12	5510	NUT	36	5510	SCREW
13	5510	CLAMP	37	5518	MANIFOLD
14	5510	COVER	38	5510	VALVE AY
15	5510	GASKET	39	5510	ARM
16	5510	GASRET	40	5510	COUPLER
17	5510	SCREEN	41	5510	GASKET
18	5505	PIN	42	5510	PLUG
19	5505	ELIMINATOR	43	5510	RING
20	5505	COUPLING	44	5510	CHAIN
21	5505	COCK	45	5510	SCREW
22	5505	HOSE	46	5510	STUD
23	5505	CLAMP	47	5505	NUT
24	5505	NIPPLE	48	5505	WASHER

INDEX TO PARTS, FIGURE 23

Reference Number	Functional Group	Item Name
1	5510	NUT
2	5510	VALVE AY
3	5510	GASKET
4	5510	GASKET
5	5510	ELBOW
6	5510	WASHER
7	5510	SCREW
8	5518	MANIFOLD
9	5510	PLUG
10	5510	STUD
11	5510	ADAPTER
12	5510	SCREW
13	5510	CAP



EMC 4320-218-35P/30

Figure 23. Manifold.

SECTION V. INDEX-FEDERAL STOCK NUMBER AND REFERENCE NUMBER
 CROSS-REFERENCE TO INDEX NUMBER

STOCK NUMBER	INDEX NUMBER	STOCK NUMBER	INDEX NUMBER
1055-033-6209	00294	2920-360-8381	00010
2530-287-2314	00304	2920-360-8381	00237
2530-352-6960	00297	2920-524-9572	00229
2530-656-7537	00292	2920-524-9573	00231
2530-727-1109	00296	2920-524-9574	00233
2530-737-5142	00299	2920-524-9578	00235
2540-213-7128	00325	2920-810-7082	00244
2540-215-8109	00323	2920-876-8346	00264
2540-390-5529	00322	2920-887-1289	00234
2540-706-2003	00328	2920-924-2042	00232
2540-720-1890	00342	2920-941-6108	00230
2540-720-1906	00339	2920-961-6160	00238
2540-752-4313	00324	2940-141-9025	00062
2540-932-9747	00335	2940-202-9653	00055
2610-269-7332	00306	2940-313-6590	00056
2610-269-9586	00307	2940-325-4438	00127
2805-091-8703	00180	2940-360-8326	00030
2805-096-6923	00078	2940-391-3328	00065
2805-213-8441	00161	2940-391-3330	00066
2805-292-3984	00014	2940-393-5988	00057
2805-292-3984	00099	2940-536-1257	00012
2805-353-5924	00210	2940-536-1257	00024
2805-353-5925	00224	2940-752-9093	00059
2805-353-5926	00223	2940-768-7718	00123
2805-353-5927	00222	2990-201-2031	00179
2805-353-5928	00219	2990-358-4789	00009
2805-353-5929	00209	2990-358-4789	00162
2805-353-5930	00212	2990-563-8056	00199
2805-353-5931	00213	2990-571-0454	00204
2805-360-8326	00086	2990-624-9956	00163
2805-366-6351	00004	2990-656-7482	00203
2805-366-6351	00193	2990-966-3573	00175
2805-368-6641	00027	2995-197-5863	00178
2805-368-6641	00044	3010-288-2655	00159
2805-371-4615	00072	3110-100-0532	00295
2805-399-6982	00011	3110-100-3526	00293
2805-399-6982	00095	3110-198-1050	00450
2805-399-6984	00007	3655-304-7479	00455
2805-399-6984	00023	3805-930-5758	00092
2805-424-2815	00214	3990-563-8012	00408
2805-428-2162	00006	3990-563-8018	00511
2805-428-2162	00071	3990-563-8034	00135
2805-428-2191	00382	3990-563-8051	00457
2805-524-9566	00003	3990-566-8860	00331
2805-563-8042	00122	3990-566-8860	00344
2805-575-0589	00040	3990-566-8860	00357
2805-586-4941	00170	4320-012-4463	00364
2805-624-9940	00005	4320-647-1918	00032
2805-624-9940	00105	4320-647-1918	00088
2805-647-1914	00249	4320-647-1937	00255
2805-647-1945	00376	4320-647-1939	00259
2805-766-8163	00022	4320-647-1940	00257
2805-966-3547	00096	4320-647-1941	00256
2910-030-3580	00106	4320-656-7455	00449
2910-141-9758	00141	4320-656-7455	00456
2910-142-2738	00188	4320-656-7457	00197
2910-255-2298	00104	4320-656-7471	00149
2910-339-4836	00114	4320-656-7519	00402
2910-354-3834	00187	4330-291-5092	00060
2910-382-8786	00186	4710-277-5525	00074
2910-429-3539	00189	4710-277-5525	00077
2910-464-3768	00075	4710-277-5525	00080
2910-492-7687	00145	4710-277-5525	00156
2910-656-7478	00198	4720-203-1032	00412
2910-777-3597	00153	4720-203-1032	00416
2910-777-7183	00192	4720-203-1032	00420
2910-808-5664	00154	4720-288-9766	00129
2920-278-6104	00268	4720-656-7456	00413
2920-293-5212	00243	4720-732-7554	00458
2920-309-8057	00236	4720-807-7088	00130

SECTION V. INDEX-FEDERAL STOCK NUMBER AND REFERENCE NUMBER
 CROSS-REFERENCE TO INDEX NUMBER (CONTINUED)

STOCK NUMBER	INDEX NUMBER	STOCK NUMBER	INDEX NUMBER
4730-011-6452	00073	5305-674-3583	00045
4730-011-8831	00173	5305-724-6761	00017
4730-013-7387	00155	5305-879-3825	00386
4730-042-8988	00098	5305-983-8084	00194
4730-042-8988	00490	5305-984-6191	00177
4730-090-0832	00398	5305-984-6193	00393
4730-186-0418	00205	5305-984-6210	00261
4730-187-7595	00454	5305-988-1721	00218
4730-196-1538	00422	5305-988-1723	00217
4730-196-1963	00421	5305-988-1725	00370
4730-230-1996	00146	5305-988-1728	00369
4730-249-1474	00406	5305-988-1730	00133
4730-249-9332	00405	5306-042-6936	00287
4730-254-6225	00053	5306-206-1555	00298
4730-266-0532	00048	5306-225-8494	00208
4730-266-0532	00140	5306-225-8496	00049
4730-277-1895	00400	5306-225-8496	00050
4730-277-8265	00404	5306-225-8496	00126
4730-277-8265	00423	5306-225-8497	00112
4730-277-8273	00144	5306-225-8498	00160
4730-287-1539	00076	5306-225-9081	00311
4730-287-1539	00079	5306-225-9081	00447
4730-287-1614	00403	5306-269-3209	00301
4730-358-5965	00128	5306-396-0855	00058
4730-447-9277	00143	5306-550-3860	00338
4730-533-4840	00410	5306-616-2955	00103
4730-533-4840	00414	5306-616-2955	00448
4730-533-4840	00418	5306-637-8557	00275
4730-555-3854	00451	5307-208-5815	00031
4730-640-6188	00487	5307-261-2636	00442
4730-656-7484	00397	5307-268-5751	00504
4730-692-8775	00052	5307-268-5751	00506
4730-711-6699	00517	5307-268-5751	00507
4730-714-6527	00479	5307-268-5752	00444
4730-729-5529	00478	5307-268-5752	00505
4730-729-7068	00321	5307-360-0720	00443
4730-900-7233	00087	5307-737-5503	00245
4730-968-6129	00082	5310-010-3319	00430
4820-287-4268	00142	5310-010-3320	00035
4820-287-4268	00453	5310-010-3320	00068
4820-720-2487	00436	5310-010-3320	00089
4930-098-5160	00452	5310-010-3320	00090
4930-098-5166	00467	5310-010-3320	00110
4930-711-5604	00347	5310-010-3320	00115
4930-732-7749	00499	5310-010-3320	00137
4930-732-7750	00500	5310-010-3320	00183
5305-011-0120	00503	5310-010-3342	00100
5305-011-0500	00427	5310-011-3739	00424
5305-011-3231	00385	5310-012-0214	00468
5305-012-0222	00262	5310-012-0361	00258
5305-018-0173	00334	5310-012-0370	00097
5305-042-5953	00016	5310-012-0376	00312
5305-068-0498	00215	5310-012-0376	00467
5305-068-0500	00176	5310-012-0377	00441
5305-269-3211	00314	5310-012-0380	00372
5305-269-3211	00360	5310-012-0622	00391
5305-269-3211	00495	5310-012-1574	00019
5305-269-3213	00491	5310-012-1574	00348
5305-269-3214	00028	5310-017-8537	00316
5305-269-3214	00494	5310-017-8632	00020
5305-269-3217	00242	5310-045-3296	00266
5305-277-5978	00263	5310-061-1258	00247
5305-296-3206	00216	5310-064-8521	00501
5305-371-3333	00064	5310-149-9130	00033
5305-543-4497	00148	5310-176-8137	00425
5305-543-4497	00492	5310-209-3586	00042
5305-543-4497	00493	5310-221-3129	00034
5305-563-8055	00343	5310-261-7340	00285
5305-647-1948	00464	5310-261-7340	00515
5305-674-3583	00029	5310-261-7341	00138

SECTION V. INDEX-FEDERAL STOCK NUMBER AND REFERENCE NUMBER
 CROSS-REFERENCE TO INDEX NUMBER (CONTINUED)

STOCK NUMBER	INDEX NUMBER	STOCK NUMBER	INDEX NUMBER
5310-261-7341	00181	5315-839-5820	00461
5310-261-7341	00195	5330-096-8177	00439
5310-261-7341	00226	5330-187-2962	00190
5310-262-3000	00061	5330-255-1298	00070
5310-265-9214	00025	5330-255-1298	00085
5310-353-5895	00168	5330-255-1298	00522
5310-360-8336	00046	5330-285-6378	00302
5310-427-5458	00165	5330-291-7918	00108
5310-427-5458	00166	5330-413-5347	00109
5310-523-2405	00300	5330-536-8804	00013
5310-543-2629	00131	5330-542-1090	00466
5310-543-5653	00240	5330-542-1091	00481
5310-550-0285	00392	5330-542-1091	00482
5310-582-9920	00041	5330-542-1091	00483
5310-582-9927	00225	5330-542-1091	00523
5310-584-5005	00167	5330-542-1092	00484
5310-584-5005	00366	5330-599-1285	00067
5310-584-5272	00289	5330-599-5966	00008
5310-584-5272	00336	5330-599-5966	00113
5310-584-8732	00241	5330-612-2414	00440
5310-595-6509	00265	5330-899-4509	00480
5310-595-7237	00246	5340-563-8014	00332
5310-596-4922	00182	5340-563-8014	00345
5310-619-3555	00132	5340-656-7464	00333
5310-637-9541	00303	5340-656-7464	00346
5310-637-9541	00317	5340-656-7464	00359
5310-637-9541	00445	5340-656-7464	00489
5310-637-9541	00514	5340-656-7464	00524
5310-639-1497	00513	5340-656-7470	00327
5310-655-9544	00282	5340-726-0224	00150
5310-725-5466	00157	5340-767-8265	00437
5310-725-5466	00361	5340-823-5318	00435
5310-732-0558	00147	5940-050-7106	00252
5310-732-0558	00313	5975-284-9305	00251
5310-732-0558	00354	5975-656-7401	00125
5310-732-0558	00485	6145-284-0660	00253
5310-732-0558	00486	6150-679-3593	00250
5310-763-8920	00015	6220-656-7468	00371
5310-763-8920	00341	6620-211-8751	00164
5310-816-1030	00288	6680-331-7887	00394
5310-982-4949	00063	6680-343-5561	00069
5315-272-6827	00172	6680-514-4094	00395
5315-297-1942	00171	6685-718-9985	00407
5315-584-1623	00037	6685-766-8173	00409
5315-647-1931	00038	6685-766-8175	00417
5315-656-7465	00329	9905-734-5903	00368
5315-830-8824	00326	9905-734-5904	00367
5315-839-2325	00169		

REFERENCE NO.	MFG CODE	INDEX NO.	REFERENCE NO.	MFG CODE	INDEX NO.
AB97B2S1	66289	00022	BH116	66289	00211
AGS02	25567	00438	BH155C	66289	00081
AP6081	09367	00128	BK72A	66289	00018
A0402	25567	00401	B1092B	03933	00456
A13763	25567	00269	B1206	25567	00343
A1917	03933	00452	B1209-1	25567	00356
A2628	03933	00455	B1214	25567	00330
A2629	03933	00467	B1850	25567	00477
A2998	03933	00457	C0607	25567	00444
A3233	03933	00462	C21P	73370	00062
A3467	03933	00459	C252A	25567	00472
A3468	03933	00463	C255	81718	00502
A393	03933	00464	FMXZE4B7-4	82796	00239
A552	18265	00122	F21P	73370	00055
BH103	66289	00044	GD103-1	66289	00238

SECTION V. INDEX-FEDERAL STOCK NUMBER AND REFERENCE NUMBER
 CROSS-REFERENCE TO INDEX NUMBER (CONTINUED)

REFERENCE NO.	MFG CODE	INDEX NO.	REFERENCE NO.	MFG CODE	INDEX NO.
S884	25567	00331	18520	33116	00295
S884	25567	00344	18590	33116	00293
S884	25567	00357	19-36	78252	00149
S886	25567	00198	2-282	61463	00458
S925	25567	00397	2X1674-1	18265	00127
S926	25567	00274	24575	33116	00300
S933	25567	00203	2550-38	25567	00426
S964	25567	00453	2612BXB	25567	00377
TC381B	66289	00171	2613AB	25567	00375
TF96-4	66289	00192	2613BXA	25567	00379
T04	25567	00460	2613BXB	25567	00378
T104	74410	00327	2613BXC	25567	00376
T62-0	74410	00324	2613DB	25567	00374
T63-0	74410	00323	27854	33116	00294
T640	74410	00325	27856	3316	00302
T67-0	74410	00326	33546	33116	00299
T84H1	66289	00163	33550	33116	00298
U226A	66289	00093	33552	33116	00297
U230H	66289	00092	33958	33116	00296
VB175	66289	00164	33995	33116	00304
VE240-2	66289	00180	4635	25567	00437
VE439G	66289	00260	4635G	25567	00439
VE575B	66289	00199	48X4	79470	00140
VE647	66289	00249	49X4A	79470	00053
VE674A	66289	00159	5003	36251	00321
VE689A	66289	00175	5190G	25567	00466
W04108	25567	00154	5228	25567	00332
XA4	66289	00177	5228	25567	00345
XK63-2	66289	00429	5228	25567	00358
XK7A	66289	00082	5241	73370	00057
XK7B	66289	00083	5310	73370	00056
YC9F	66289	00264	5361	25567	00511
YD213H	66289	00229	5371G	25567	00484
YD213J	66289	00231	5372G	25567	00481
YD213K	66289	00233	5372G	25567	00482
YD213L	66289	00235	5372G	25567	00483
YL135	66289	00250	5453	25567	00479
YL191	66289	00268	546A	25567	00335
OW352	78480	00188	5463	25667	00347
OW362	78480	00189	567AS	25567	00395
OW447	78480	00186	5998	25567	00150
OW476T	78480	00185	6001B	25567	00310
00904-102	79470	00411	6002	25567	00315
00904-102	79470	00415	6006	25567	00402
00904-102	79470	00419	6007	25567	00371
00904-604	79470	00410	6010	25567	00329
00904-604	79470	00414	6010A	25567	00355
00904-604	79470	00418	6031	25567	00197
030	25567	00281	6114	25567	00339
06096	78480	00190	6137	25567	00342
06137	78480	00187	6836A	25567	00508
10-3774	96152	00104	7085	25567	00478
102153	73370	00066	71-100	25567	00280
11559	73370	00059	72-801	25567	00276
11562	73370	00065	72-802	25567	00277
11580	73370	00058	72-823	25567	00278
11581	73370	00061	72-824	25567	00279
11582	73370	00067	7412521	00000	00406
11583	73370	00060	7446	25567	00254
11706	25567	00319	7446A	25567	00259
11706	25567	00340	7446C	25567	00257
11706	25567	00353	74468	25567	00256
11706	25567	00521	7515	25567	00255
125620	00000	00398	777D	25567	00389
16-4	96152	00108	78	74410	00328
16-456	96152	00109	8333722	00000	00141
16-5594	25567	00286	8514	25567	00517
16-5596	25567	00284	9490	25567	00152
16-649	96152	00106	9490A	25567	00151
16A105	96152	00107	9546	25567	00518

SECTION V. INDEX-FEDERAL STOCK NUMBER AND REFERENCE NUMBER
 CROSS-REFERENCE TO INDEX NUMBER (CONTINUED)

REFERENCE NO.	MFG CODE	INDEX NO.	REFERENCE NO.	MFG CODE	INDEX NO.
GD538A	66289	00113	QD616	66289	00010
G1195C	70955	00114	QD616	66289	00237
H1436	81718	00488	QD631	66289	00007
H366M1	81718	00497	QD631	66289	00023
H477A	81718	00498	QD635	66289	00006
H508M	81718	00499	QD635	66289	00071
H6388M	81718	00440	QD67	66289	00004
H778M	81718	00500	QD67	66289	00193
J03	25567	00431	QF91	66289	00005
J06	24467	00515	QF91	66289	00105
LD24019S1	66289	00096	Q18C	66289	00003
LJ131	66289	00136	RC91	66289	00030
LJ300M	66289	00032	RC91	66289	00086
LJ300M	66289	00088	RF1281	66289	00087
LL118	66289	00135	RF1343	66289	00054
LL18	66289	00130	RF269	66289	00048
LL89	66289	00129	RF270-4	66289	00052
L060-1	66289	00051	RF320-3	66289	00143
MSS3110-12	08288	00450	RJ143S1	66289	00069
MSS4820-1	08288	00436	RJ159A	66289	00084
MSS9905-5	08288	00367	RM1161	66289	00075
MS270-22-11	96906	00434	RM1201A	66289	00145
MS270-27-17	96906	00475	RM536	66289	00072
MS270-29-17	96906	00487	RM772	66289	00078
MS27028-11	96906	00435	RS111C	66289	00408
MS27030-9	96906	00480	RS51A	66289	00394
MS35388-9	96906	00307	SA65A	66289	00026
MS35392-8	96906	00306	SD108	66289	00380
MS35690-604	96906	00283	SD115N	66289	00382
MS35875-3	96906	00117	SD197A	66289	00381
MS35911-1	96906	00243	SD1978	25567	00383
MS51009-1	96906	00244	SD252	66289	00384
MS51011-10	96906	00234	SE124AG	66289	00221
MS51011-13	96906	00230	SE124L	66289	00220
MS51011-14	96906	00232	SE125	66289	00210
NC146H	66289	00040	SE125A	66289	00224
PA334	66289	00038	SE126	66289	00223
PC251	66289	00031	SE126A	66289	00222
PD11	25567	00282	SE127	66289	00219
PD173A	66289	00168	SE127A	66289	00209
PE65-1	66289	00042	SE128B	66289	00212
PG493	66289	00161	SE128C	66289	00213
PG512	66289	00134	SE48	66289	00214
PG630	66289	00236	S1003	25567	00417
PH245	66289	00070	S1243	25567	00204
PH245	66289	00085	S1246	25567	00202
PK121	66289	00174	S1253	25567	00476
PL24	66289	00037	S1254	25567	00470
PM111-1	66289	00178	S1254A	25567	00471
PM76	66289	00179	S1453	25567	00153
PO4	25567	00490	S1508	25567	00364
P10-1361	18265	00121	S1537	25567	00333
P10-1362	18265	00118	S1537	25567	00346
P1115E	66289	00172	S1537	25567	00359
P1165	66289	00170	S1537	25567	00489
P17702	18265	00119	S1772	25567	00270
P17703	18265	00120	S512	25567	00155
P2706	18265	00125	S515	25567	00413
P8720	18265	00124	S577	25567	00399
P8723	18265	00123	S635	25567	00449
QB83	66289	00014	S673	25567	00368
QB83	66289	00099	S708	25567	00292
QC62	66289	00011	S714	25567	00407
QC62	66289	00095	S715	25567	00409
QD482	66289	00013	S791	25567	00320
QD538A	66289	00008	S793A	81718	00512
QD595A	66289	00012	S795A	25567	00496
QD595A	66289	00024	S797	25567	00473
QD615	66289	00009	S798A	25567	00474
QD615	66289	00162	S873	25567	00428

SECTION V. INDEX-FEDERAL STOCK NUMBER AND REFERENCE NUMBER

CROSS-REFERENCE TO INDEX NUMBER (CONTINUED)

REFERENCE NO.	MFG CODE	INDEX NO.	REFERENCE NO.	MFG CODE	INDEX NO.
9619	25567	00271	97334A	25567	00510
9698	25567	00351	9734B	25567	00509
9733	25567	00352			

By Order of the Secretary of the Army:

HAROLD K. JOHNSON,
General, United States Army,
Chief of Staff.

Official:

KENNETH G. WICKHAM,
Major General, United States Army,
The Adjutant General.

Distribution:

To be distributed in accordance with DA Form 12-25, Section I, Organizational maintenance requirements for Pumps, Centrifugal: Petroleum.

**TM 5-4320-218-20P PUMP, CENTRIFUGAL: PETROLEUM; GASOLINE ENGINE; TRAILER MOUNTED;
4 IN., 350 GPM-1968**